

BLZF1 Antibody - C-terminal region
Rabbit Polyclonal Antibody
Catalog # AI16143**Specification**

BLZF1 Antibody - C-terminal region - Product Information

Application	WB
Primary Accession	O9H2G9
Other Accession	NP_003657
Reactivity	Human
Host	Rabbit
Clonality	Polyclonal
Calculated MW	44kDa KDa

BLZF1 Antibody - C-terminal region - Additional Information**Gene ID** 8548**Alias Symbol** **BLZF1, JEM1,****Other Names**

Golgin-45, Basic leucine zipper nuclear factor 1, JEM-1, p45 basic leucine-zipper nuclear factor, BLZF1, JEM1

Format

Liquid. Purified antibody supplied in 1x PBS buffer with 0.09% (w/v) sodium azide and 2% sucrose.

Reconstitution & StorageAdd 50 μ l of distilled water. Final Anti-BLZF1 antibody concentration is 1 mg/ml in PBS buffer with 2% sucrose. For longer periods of storage, store at -20°C. Avoid repeat freeze-thaw cycles.**Precautions**

BLZF1 Antibody - C-terminal region is for research use only and not for use in diagnostic or therapeutic procedures.

BLZF1 Antibody - C-terminal region - Protein Information**Name** BLZF1**Synonyms** JEM1**Function**

Required for normal Golgi structure and for protein transport from the endoplasmic reticulum (ER) through the Golgi apparatus to the cell surface.

Cellular Location

Golgi apparatus membrane [Isoform 2]: Cytoplasm. Note=Not detected in the nucleus

Tissue Location

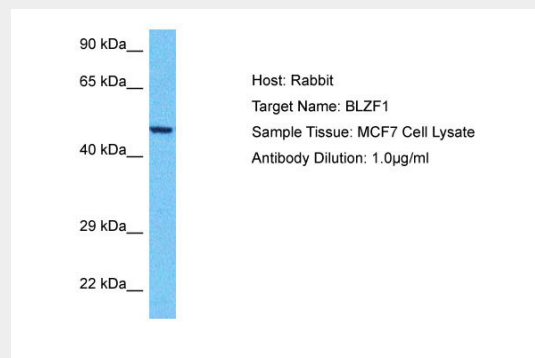
Detected in adrenal gland (PubMed:9129147).

BLZF1 Antibody - C-terminal region - Protocols

Provided below are standard protocols that you may find useful for product applications.

- [Western Blot](#)
- [Blocking Peptides](#)
- [Dot Blot](#)
- [Immunohistochemistry](#)
- [Immunofluorescence](#)
- [Immunoprecipitation](#)
- [Flow Cytometry](#)
- [Cell Culture](#)

BLZF1 Antibody - C-terminal region - Images



Host: Rabbit
Target Name: BLZF1
Sample Tissue: MCF7 Whole Cell lysates
Antibody Dilution: 1.0µg/ml

BLZF1 Antibody - C-terminal region - Background

Required for normal Golgi structure and for protein transport from the endoplasmic reticulum (ER) through the Golgi apparatus to the cell surface.

BLZF1 Antibody - C-terminal region - References

Duprez E., et al. *Oncogene* 14:1563-1570(1997).
Tong J.-H., et al. *Genomics* 69:380-390(2000).
Short B., et al. *J. Cell Biol.* 155:877-883(2001).
Gregory S.G., et al. *Nature* 441:315-321(2006).
Mural R.J., et al. Submitted (JUL-2005) to the EMBL/GenBank/DDBJ databases.