

**PRP31 Antibody - C-terminal region**  
**Rabbit Polyclonal Antibody**  
**Catalog # AI16120**

**Specification**

---

**PRP31 Antibody - C-terminal region - Product Information**

Application	WB
Primary Accession	<a href="#">Q8WWY3</a>
Reactivity	Human
Host	Rabbit
Clonality	Polyclonal
Calculated MW	54kDa KDa

**PRP31 Antibody - C-terminal region - Additional Information**

**Gene ID** 26121

**Alias Symbol** PRPF31, PRP31,  
**Other Names**

U4/U6 small nuclear ribonucleoprotein Prp31, Pre-mRNA-processing factor 31, Serologically defined breast cancer antigen NY-BR-99, U4/U6 snRNP 61 kDa protein, Protein 61K, hPrp31, PRPF31, PRP31

**Format**

Liquid. Purified antibody supplied in 1x PBS buffer with 0.09% (w/v) sodium azide and 2% sucrose.

**Reconstitution & Storage**

Add 50 µl of distilled water. Final Anti-PRP31 antibody concentration is 1 mg/ml in PBS buffer with 2% sucrose. For longer periods of storage, store at -20°C. Avoid repeat freeze-thaw cycles.

**Precautions**

PRP31 Antibody - C-terminal region is for research use only and not for use in diagnostic or therapeutic procedures.

**PRP31 Antibody - C-terminal region - Protein Information**

**Name** PRPF31 ([HGNC:15446](#))

**Synonyms** PRP31

**Function**

Involved in pre-mRNA splicing as component of the spliceosome (PubMed:<a href="http://www.uniprot.org/citations/11867543" target="\_blank">11867543</a>, PubMed:<a href="http://www.uniprot.org/citations/20118938" target="\_blank">20118938</a>, PubMed:<a href="http://www.uniprot.org/citations/28781166" target="\_blank">28781166</a>). Required for the assembly of the U4/U5/U6 tri-snRNP complex, one of the building blocks of the spliceosome (PubMed:<a href="http://www.uniprot.org/citations/11867543" target="\_blank">11867543</a>).

### Cellular Location

Nucleus. Nucleus speckle. Nucleus, Cajal body. Note=Predominantly found in speckles and in Cajal bodies.

### Tissue Location

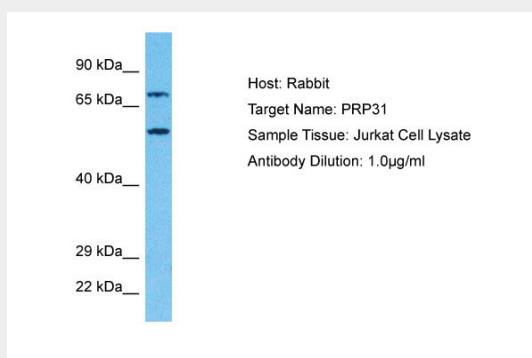
Ubiquitously expressed.

### PRP31 Antibody - C-terminal region - Protocols

Provided below are standard protocols that you may find useful for product applications.

- [Western Blot](#)
- [Blocking Peptides](#)
- [Dot Blot](#)
- [Immunohistochemistry](#)
- [Immunofluorescence](#)
- [Immunoprecipitation](#)
- [Flow Cytometry](#)
- [Cell Culture](#)

### PRP31 Antibody - C-terminal region - Images



Host: Rabbit  
Target Name: PRP31  
Sample Tissue: Jurkat Whole Cell lysates  
Antibody Dilution: 1.0µg/ml

### PRP31 Antibody - C-terminal region - Background

Involved in pre-mRNA splicing. Required for the assembly of the U4/U5/U6 tri-snRNP complex, one of the building blocks of the spliceosome.

### PRP31 Antibody - C-terminal region - References

Makarova O.V., et al. EMBO J. 21:1148-1157(2002).  
Scanlan M.J., et al. Cancer Immun. 1:4-4(2001).  
Wiemann S., et al. Genome Res. 11:422-435(2001).  
Ota T., et al. Nat. Genet. 36:40-45(2004).  
Oshikawa M., et al. Invest. Ophthalmol. Vis. Sci. 52:6662-6670(2011).