

2ABA Antibody - N-terminal region
Rabbit Polyclonal Antibody
Catalog # AI16117

Specification

2ABA Antibody - N-terminal region - Product Information

| | |
|-------------------|------------------------|
| Application | WB |
| Primary Accession | P63151 |
| Reactivity | Human |
| Host | Rabbit |
| Clonality | Polyclonal |
| Calculated MW | 49kDa KDa |

2ABA Antibody - N-terminal region - Additional Information

Gene ID 5520

Alias Symbol PPP2R2A,
Other Names

Serine/threonine-protein phosphatase 2A 55 kDa regulatory subunit B alpha isoform, PP2A subunit B isoform B55-alpha, PP2A subunit B isoform PR55-alpha, PP2A subunit B isoform R2-alpha, PP2A subunit B isoform alpha, PPP2R2A

Format

Liquid. Purified antibody supplied in 1x PBS buffer with 0.09% (w/v) sodium azide and 2% sucrose.

Reconstitution & Storage

Add 50 μ l of distilled water. Final Anti-2ABA antibody concentration is 1 mg/ml in PBS buffer with 2% sucrose. For longer periods of storage, store at -20°C. Avoid repeat freeze-thaw cycles.

Precautions

2ABA Antibody - N-terminal region is for research use only and not for use in diagnostic or therapeutic procedures.

2ABA Antibody - N-terminal region - Protein Information

Name PPP2R2A

Function

The B regulatory subunit might modulate substrate selectivity and catalytic activity, and also might direct the localization of the catalytic enzyme to a particular subcellular compartment. Essential for serine/threonine-protein phosphatase 2A-mediated dephosphorylation of WEE1, preventing its ubiquitin-mediated proteolysis, increasing WEE1 protein levels, and promoting the G2/M checkpoint (PubMed: <http://www.uniprot.org/citations/33108758> target="_blank">33108758).

Tissue Location

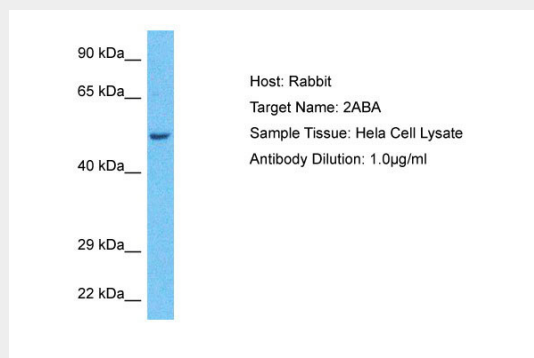
Expressed in all tissues examined.

2ABA Antibody - N-terminal region - Protocols

Provided below are standard protocols that you may find useful for product applications.

- [Western Blot](#)
- [Blocking Peptides](#)
- [Dot Blot](#)
- [Immunohistochemistry](#)
- [Immunofluorescence](#)
- [Immunoprecipitation](#)
- [Flow Cytometry](#)
- [Cell Culture](#)

2ABA Antibody - N-terminal region - Images



Host: Rabbit
Target Name: 2ABA
Sample Tissue: HeLa Whole Cell lysates
Antibody Dilution: 1.0µg/ml

2ABA Antibody - N-terminal region - Background

The B regulatory subunit might modulate substrate selectivity and catalytic activity, and also might direct the localization of the catalytic enzyme to a particular subcellular compartment.

2ABA Antibody - N-terminal region - References

Mayer R.E., et al. *Biochemistry* 30:3589-3597(1991).
Ota T., et al. *Nat. Genet.* 36:40-45(2004).
Nusbaum C., et al. *Nature* 439:331-335(2006).
Mural R.J., et al. Submitted (SEP-2005) to the EMBL/GenBank/DDBJ databases.
Li H.H., et al. *EMBO J.* 26:402-411(2007).