

**NDUAA Antibody - N-terminal region**  
**Rabbit Polyclonal Antibody**  
**Catalog # AI16111****Specification**

---

**NDUAA Antibody - N-terminal region - Product Information**

Application	<b>WB</b>
Primary Accession	<a href="#">O95299</a>
Other Accession	<a href="#">NP_004535</a>
Reactivity	<b>Human</b>
Host	<b>Rabbit</b>
Clonality	<b>Polyclonal</b>
Calculated MW	<b>39kDa KDa</b>

**NDUAA Antibody - N-terminal region - Additional Information****Gene ID** 4705Alias Symbol **NDUFA10,****Other Names**

NADH dehydrogenase [ubiquinone] 1 alpha subcomplex subunit 10, mitochondrial, Complex I-42kD, CI-42kD, NADH-ubiquinone oxidoreductase 42 kDa subunit, NDUFA10

**Format**

Liquid. Purified antibody supplied in 1x PBS buffer with 0.09% (w/v) sodium azide and 2% sucrose.

**Reconstitution & Storage**Add 50  $\mu$ l of distilled water. Final Anti-NDUAA antibody concentration is 1 mg/ml in PBS buffer with 2% sucrose. For longer periods of storage, store at -20°C. Avoid repeat freeze-thaw cycles.**Precautions**

NDUAA Antibody - N-terminal region is for research use only and not for use in diagnostic or therapeutic procedures.

**NDUAA Antibody - N-terminal region - Protein Information****Name** NDUFA10**Function**

Accessory subunit of the mitochondrial membrane respiratory chain NADH dehydrogenase (Complex I), that is believed not to be involved in catalysis. Complex I functions in the transfer of electrons from NADH to the respiratory chain. The immediate electron acceptor for the enzyme is believed to be ubiquinone.

**Cellular Location**

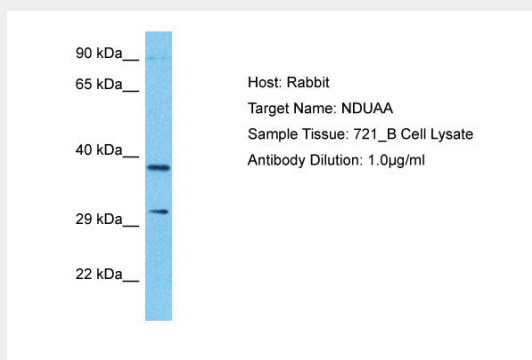
Mitochondrion matrix

## NDUAA Antibody - N-terminal region - Protocols

Provided below are standard protocols that you may find useful for product applications.

- [Western Blot](#)
- [Blocking Peptides](#)
- [Dot Blot](#)
- [Immunohistochemistry](#)
- [Immunofluorescence](#)
- [Immunoprecipitation](#)
- [Flow Cytometry](#)
- [Cell Culture](#)

## NDUAA Antibody - N-terminal region - Images



Host: Rabbit  
Target Name: NDUAA  
Sample Tissue: 721\_B Whole Cell lysates  
Antibody Dilution: 1.0µg/ml

## NDUAA Antibody - N-terminal region - Background

Accessory subunit of the mitochondrial membrane respiratory chain NADH dehydrogenase (Complex I), that is believed not to be involved in catalysis. Complex I functions in the transfer of electrons from NADH to the respiratory chain. The immediate electron acceptor for the enzyme is believed to be ubiquinone.

## NDUAA Antibody - N-terminal region - References

Loeffen J.L.C.M., et al. *Biochem. Biophys. Res. Commun.* 253:415-422(1998).  
Hu W., et al. Submitted (NOV-2001) to the EMBL/GenBank/DDBJ databases.  
Hillier L.W., et al. *Nature* 434:724-731(2005).  
Murray J., et al. *J. Biol. Chem.* 278:13619-13622(2003).  
Burkard T.R., et al. *BMC Syst. Biol.* 5:17-17(2011).