

**DFFB Antibody - C-terminal region**  
**Rabbit Polyclonal Antibody**  
**Catalog # AI16100****Specification**

---

**DFFB Antibody - C-terminal region - Product Information**

Application	<b>WB</b>
Primary Accession	<a href="#">O76075</a>
Other Accession	<a href="#">NP_004393</a>
Reactivity	<b>Human</b>
Host	<b>Rabbit</b>
Clonality	<b>Polyclonal</b>
Calculated MW	<b>37kDa KDa</b>

**DFFB Antibody - C-terminal region - Additional Information****Gene ID** 1677**Alias Symbol** **DFFB, CAD, DFF2, DFF40,****Other Names**

DNA fragmentation factor subunit beta, 3.-.-, Caspase-activated deoxyribonuclease, CAD, Caspase-activated DNase, Caspase-activated nuclease, CPAN, DNA fragmentation factor 40 kDa subunit, DFF-40, DFFB, CAD, DFF2, DFF40

**Format**

Liquid. Purified antibody supplied in 1x PBS buffer with 0.09% (w/v) sodium azide and 2% sucrose.

**Reconstitution & Storage**

Add 50 &amp;mu; l of distilled water. Final Anti-DFFB antibody concentration is 1 mg/ml in PBS buffer with 2% sucrose. For longer periods of storage, store at -20°C. Avoid repeat freeze-thaw cycles.

**Precautions**

DFFB Antibody - C-terminal region is for research use only and not for use in diagnostic or therapeutic procedures.

**DFFB Antibody - C-terminal region - Protein Information****Name** DFFB**Synonyms** CAD, DFF2, DFF40**Function**

Nuclease that induces DNA fragmentation and chromatin condensation during apoptosis. Degrades naked DNA and induces apoptotic morphology.

**Cellular Location**

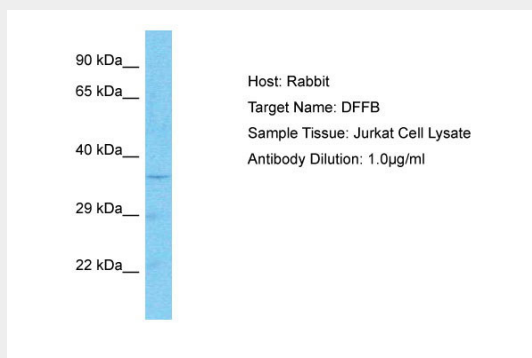
Cytoplasm. Nucleus.

## DFFB Antibody - C-terminal region - Protocols

Provided below are standard protocols that you may find useful for product applications.

- [Western Blot](#)
- [Blocking Peptides](#)
- [Dot Blot](#)
- [Immunohistochemistry](#)
- [Immunofluorescence](#)
- [Immunoprecipitation](#)
- [Flow Cytometry](#)
- [Cell Culture](#)

## DFFB Antibody - C-terminal region - Images



Host: Rabbit  
Target Name: DFFB  
Sample Tissue: Jurkat Whole Cell lysates  
Antibody Dilution: 1.0µg/ml

## DFFB Antibody - C-terminal region - Background

Nuclease that induces DNA fragmentation and chromatin condensation during apoptosis. Degrades naked DNA and induces apoptotic morphology.

## DFFB Antibody - C-terminal region - References

Liu X., et al. Proc. Natl. Acad. Sci. U.S.A. 95:8461-8466(1998).  
Mukae N., et al. Proc. Natl. Acad. Sci. U.S.A. 95:9123-9128(1998).  
Halenbeck R., et al. Curr. Biol. 8:537-540(1998).  
Nakagawara A., et al. Submitted (JUN-1999) to the EMBL/GenBank/DDBJ databases.  
Ota T., et al. Nat. Genet. 36:40-45(2004).