

CXCR5 Antibody - N-terminal region
Rabbit Polyclonal Antibody
Catalog # AI16099

Specification

CXCR5 Antibody - N-terminal region - Product Information

Application	WB
Primary Accession	P32302
Reactivity	Human
Host	Rabbit
Clonality	Polyclonal
Calculated MW	40kDa KDa

CXCR5 Antibody - N-terminal region - Additional Information

Gene ID 643

Alias Symbol **CXCR5, BLR1, MDR15,**
Other Names

C-X-C chemokine receptor type 5, CXC-R5, CXCR-5, Burkitt lymphoma receptor 1,
Monocyte-derived receptor 15, MDR-15, CD185, CXCR5, BLR1, MDR15

Format

Liquid. Purified antibody supplied in 1x PBS buffer with 0.09% (w/v) sodium azide and 2% sucrose.

Reconstitution & Storage

Add 50 μ l of distilled water. Final Anti-CXCR5 antibody concentration is 1 mg/ml in PBS buffer with 2% sucrose. For longer periods of storage, store at -20°C. Avoid repeat freeze-thaw cycles.

Precautions

CXCR5 Antibody - N-terminal region is for research use only and not for use in diagnostic or therapeutic procedures.

CXCR5 Antibody - N-terminal region - Protein Information

Name CXCR5

Synonyms BLR1, MDR15

Function

Cytokine receptor that binds to B-lymphocyte chemoattractant (BLC). Involved in B-cell migration into B-cell follicles of spleen and Peyer patches but not into those of mesenteric or peripheral lymph nodes. May have a regulatory function in Burkitt lymphoma (BL) lymphomagenesis and/or B-cell differentiation.

Cellular Location

Cell membrane; Multi-pass membrane protein.

Tissue Location

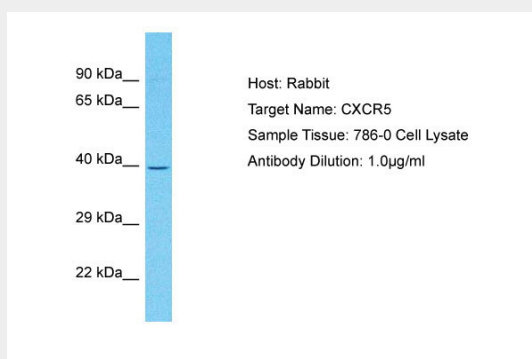
Expression in mature B-cells and Burkitt lymphoma cells

CXCR5 Antibody - N-terminal region - Protocols

Provided below are standard protocols that you may find useful for product applications.

- [Western Blot](#)
- [Blocking Peptides](#)
- [Dot Blot](#)
- [Immunohistochemistry](#)
- [Immunofluorescence](#)
- [Immunoprecipitation](#)
- [Flow Cytometry](#)
- [Cell Culture](#)

CXCR5 Antibody - N-terminal region - Images



Host: Rabbit
Target Name: CXCR5
Sample Tissue: 786-0 Whole cell lysate
s
Antibody Dilution: 1.0µg/ml

CXCR5 Antibody - N-terminal region - Background

Cytokine receptor that binds to B-lymphocyte chemoattractant (BLC). Involved in B-cell migration into B-cell follicles of spleen and Peyer patches but not into those of mesenteric or peripheral lymph nodes. May have a regulatory function in Burkitt lymphoma (BL) lymphomagenesis and/or B-cell differentiation.

CXCR5 Antibody - N-terminal region - References

Dobner T., et al. Eur. J. Immunol. 22:2795-2799(1992).
Barella L., et al. Biochem. J. 309:773-779(1995).
Legler D.F., et al. J. Exp. Med. 187:655-660(1998).
Sjoeblom T., et al. Science 314:268-274(2006).