

BMPR1A Antibody - N-terminal region
Rabbit Polyclonal Antibody
Catalog # AI16096

Specification

BMPR1A Antibody - N-terminal region - Product Information

Application	WB
Primary Accession	P36894
Other Accession	XP_005270121
Reactivity	Human
Host	Rabbit
Clonality	Polyclonal
Calculated MW	58kDa KDa

BMPR1A Antibody - N-terminal region - Additional Information

Gene ID 657

Alias Symbol **BMPR1A, ACVRLK3, ALK3,**
Other Names

Bone morphogenetic protein receptor type-1A, BMP type-1A receptor, BMPR-1A, 2.7.11.30, Activin receptor-like kinase 3, ALK-3, Serine/threonine-protein kinase receptor R5, SKR5, CD292, BMPR1A, ACVRLK3, ALK3

Format

Liquid. Purified antibody supplied in 1x PBS buffer with 0.09% (w/v) sodium azide and 2% sucrose.

Reconstitution & Storage

Add 50 μ l of distilled water. Final Anti-BMPR1A antibody concentration is 1 mg/ml in PBS buffer with 2% sucrose. For longer periods of storage, store at -20°C. Avoid repeat freeze-thaw cycles.

Precautions

BMPR1A Antibody - N-terminal region is for research use only and not for use in diagnostic or therapeutic procedures.

BMPR1A Antibody - N-terminal region - Protein Information

Name BMPR1A

Synonyms ACVRLK3, ALK3

Function

On ligand binding, forms a receptor complex consisting of two type II and two type I transmembrane serine/threonine kinases. Type II receptors phosphorylate and activate type I receptors which autophosphorylate, then bind and activate SMAD transcriptional regulators. Receptor for BMP2, BMP4, GDF5 and GDF6. Positively regulates chondrocyte differentiation through GDF5 interaction. Mediates induction of adipogenesis by GDF6. May promote the

expression of HAMP, potentially via its interaction with BMP2 (By similarity).

Cellular Location

Cell membrane; Single-pass type I membrane protein. Cell surface
{ECO:0000250|UniProtKB:P36895}

Tissue Location

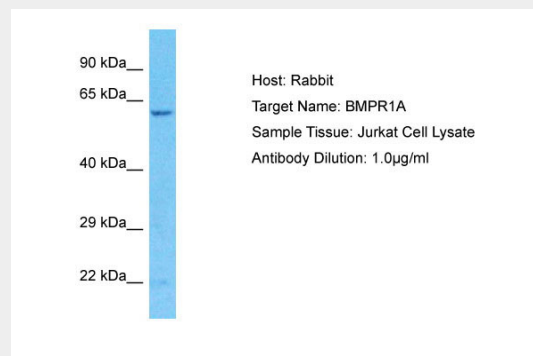
Highly expressed in skeletal muscle.

BMPR1A Antibody - N-terminal region - Protocols

Provided below are standard protocols that you may find useful for product applications.

- [Western Blot](#)
- [Blocking Peptides](#)
- [Dot Blot](#)
- [Immunohistochemistry](#)
- [Immunofluorescence](#)
- [Immunoprecipitation](#)
- [Flow Cytometry](#)
- [Cell Culture](#)

BMPR1A Antibody - N-terminal region - Images



Host: Rabbit
Target Name: BMPR1A
Sample Tissue: Jurkat Whole Cell lysates
Antibody Dilution: 1.0µg/ml

BMPR1A Antibody - N-terminal region - Background

On ligand binding, forms a receptor complex consisting of two type II and two type I transmembrane serine/threonine kinases. Type II receptors phosphorylate and activate type I receptors which autophosphorylate, then bind and activate SMAD transcriptional regulators. Receptor for BMP-2 and BMP-4.

BMPR1A Antibody - N-terminal region - References

ten Dijke P., et al. Oncogene 8:2879-2887(1993).
Ota T., et al. Nat. Genet. 36:40-45(2004).
Mahlawat P., et al. Biochemistry 51:6328-6341(2012).
Kirsch T., et al. Nat. Struct. Biol. 7:492-496(2000).
Howe J.R., et al. Nat. Genet. 28:184-187(2001).

