

**RINT1 Antibody - N-terminal region**  
**Rabbit Polyclonal Antibody**  
**Catalog # AI16076****Specification**

---

**RINT1 Antibody - N-terminal region - Product Information**

Application	WB
Primary Accession	<a href="#">O6NUQ1</a>
Other Accession	<a href="#">NM_021930</a> , <a href="#">NP_068749</a>
Reactivity	Human, Rat, Horse, Guinea Pig
Predicted	Human, Rat, Pig, Horse, Guinea Pig
Host	Rabbit
Clonality	Polyclonal
Calculated MW	87kDa KDa

**RINT1 Antibody - N-terminal region - Additional Information****Gene ID** 60561**Alias Symbol** **RINT-1**  
**Other Names**  
RAD50-interacting protein 1, RAD50 interactor 1, HsRINT-1, RINT-1, RINT1**Format**

Liquid. Purified antibody supplied in 1x PBS buffer with 0.09% (w/v) sodium azide and 2% sucrose.

**Reconstitution & Storage**

Add 50 µl of distilled water. Final Anti-RINT1 antibody concentration is 1 mg/ml in PBS buffer with 2% sucrose. For longer periods of storage, store at -20°C. Avoid repeat freeze-thaw cycles.

**Precautions**

RINT1 Antibody - N-terminal region is for research use only and not for use in diagnostic or therapeutic procedures.

**RINT1 Antibody - N-terminal region - Protein Information****Name** RINT1**Function**

Involved in regulation of membrane traffic between the Golgi and the endoplasmic reticulum (ER); the function is proposed to depend on its association in the NRZ complex which is believed to play a role in SNARE assembly at the ER. May play a role in cell cycle checkpoint control (PubMed:&lt;a href="http://www.uniprot.org/citations/11096100" target="\_blank"&gt;11096100&lt;/a&gt;). Essential for telomere length control (PubMed:&lt;a href="http://www.uniprot.org/citations/16600870" target="\_blank"&gt;16600870&lt;/a&gt;).

**Cellular Location**

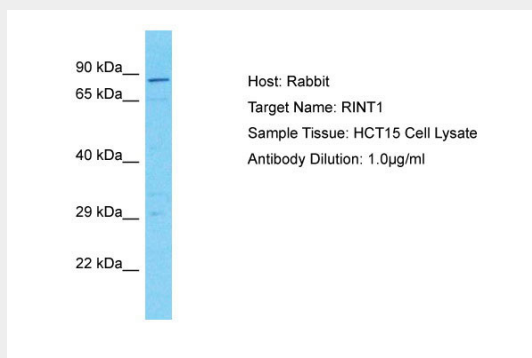
Cytoplasm. Endoplasmic reticulum membrane; Peripheral membrane protein

## RINT1 Antibody - N-terminal region - Protocols

Provided below are standard protocols that you may find useful for product applications.

- [Western Blot](#)
- [Blocking Peptides](#)
- [Dot Blot](#)
- [Immunohistochemistry](#)
- [Immunofluorescence](#)
- [Immunoprecipitation](#)
- [Flow Cytometry](#)
- [Cell Culture](#)

## RINT1 Antibody - N-terminal region - Images



Host: Rabbit  
Target Name: RINT1  
Sample Tissue: HCT15 Whole cell lysate  
s  
Antibody Dilution: 1.0µg/ml

## RINT1 Antibody - N-terminal region - Background

Involved in regulation of membrane traffic between the Golgi and the endoplasmic reticulum. May play a role in cell cycle checkpoint control. Essential for telomere length control.

## RINT1 Antibody - N-terminal region - References

Xiao J., et al. J. Biol. Chem. 276:6105-6111(2001).  
Hillier L.W., et al. Nature 424:157-164(2003).  
Ota T., et al. Nat. Genet. 36:40-45(2004).  
Hirose H., et al. EMBO J. 23:1267-1278(2004).  
Nakajima K., et al. EMBO J. 23:3216-3226(2004).