

SH3GLB1 Antibody - C-terminal region
Rabbit Polyclonal Antibody
Catalog # AI16073**Specification**

SH3GLB1 Antibody - C-terminal region - Product Information

Application	WB
Primary Accession	O9Y371
Other Accession	NP_057093
Reactivity	Human
Host	Rabbit
Clonality	Polyclonal
Calculated MW	40kDa KDa

SH3GLB1 Antibody - C-terminal region - Additional Information**Gene ID** 51100**Alias Symbol** SH3GLB1, KIAA0491, CGI-61,**Other Names**

Endophilin-B1, Bax-interacting factor 1, Bif-1, SH3 domain-containing GRB2-like protein B1, SH3GLB1, KIAA0491

Format

Liquid. Purified antibody supplied in 1x PBS buffer with 0.09% (w/v) sodium azide and 2% sucrose.

Reconstitution & StorageAdd 50 μ l of distilled water. Final Anti-SH3GLB1 antibody concentration is 1 mg/ml in PBS buffer with 2% sucrose. For longer periods of storage, store at -20°C. Avoid repeat freeze-thaw cycles.**Precautions**

SH3GLB1 Antibody - C-terminal region is for research use only and not for use in diagnostic or therapeutic procedures.

SH3GLB1 Antibody - C-terminal region - Protein Information**Name** SH3GLB1**Synonyms** KIAA0491**Function**May be required for normal outer mitochondrial membrane dynamics (PubMed:[15452144](http://www.uniprot.org/citations/15452144)). Required for coatomer-mediated retrograde transport in certain cells (By similarity). May recruit other proteins to membranes with high curvature. May promote membrane fusion (PubMed:[11604418](http://www.uniprot.org/citations/11604418)). Involved in activation of caspase-dependent apoptosis by promoting BAX/BAK1 activation (PubMed:[11604418](#)).

<http://www.uniprot.org/citations/16227588> target="_blank">16227588). Isoform 1 acts proapoptotic in fibroblasts (By similarity). Involved in caspase- independent apoptosis during nutrition starvation and involved in the regulation of autophagy. Activates lipid kinase activity of PI3K3C3 during autophagy probably by associating with the PI3K complex II (PI3KC3-C2) (PubMed:17891140). Associated with PI3KC3-C2 during autophagy may regulate the trafficking of ATG9A from the Golgi complex to the peripheral cytoplasm for the formation of autophagosomes by inducing Golgi membrane tubulation and fragmentation (PubMed:21068542). Involved in regulation of degradative endocytic trafficking and cytokinesis, probably in the context of PI3KC3-C2 (PubMed:20643123). Isoform 2 acts antiapoptotic in neuronal cells; involved in maintenance of mitochondrial morphology and promotes neuronal viability (By similarity).

Cellular Location

Cytoplasm. Golgi apparatus membrane; Peripheral membrane protein. Mitochondrion outer membrane; Peripheral membrane protein. Cytoplasmic vesicle, autophagosome membrane. Midbody. Note=Association with the Golgi apparatus depends on the cell type (By similarity). Following starvation colocalizes with ATG5 and LC3 autophagy-related protein(s) on autophagosomal membranes (PubMed:17891140). {ECO:0000250, ECO:0000269|PubMed:17891140}

Tissue Location

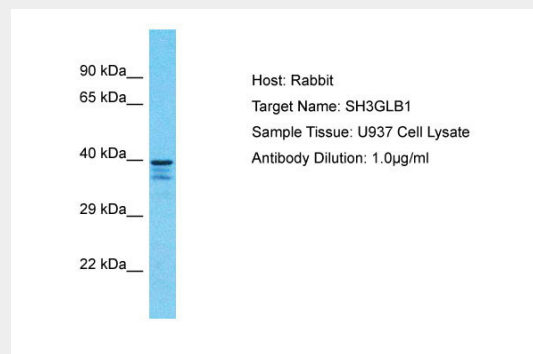
Highly expressed in heart, skeletal muscle, kidney and placenta. Detected at lower levels in brain, colon, thymus, spleen, liver, small intestine, lung and peripheral blood leukocytes

SH3GLB1 Antibody - C-terminal region - Protocols

Provided below are standard protocols that you may find useful for product applications.

- [Western Blot](#)
- [Blocking Peptides](#)
- [Dot Blot](#)
- [Immunohistochemistry](#)
- [Immunofluorescence](#)
- [Immunoprecipitation](#)
- [Flow Cytometry](#)
- [Cell Culture](#)

SH3GLB1 Antibody - C-terminal region - Images



Host: Rabbit
Target Name: SH3GLB1

Sample Tissue: U937 Whole cell lysate

S

Antibody Dilution: 1.0µg/ml

SH3GLB1 Antibody - C-terminal region - Background

May be required for normal outer mitochondrial membrane dynamics. Required for coatamer-mediated retrograde transport in certain cells. May recruit other proteins to membranes with high curvature. May promote membrane fusion.

SH3GLB1 Antibody - C-terminal region - References

- Pierrat B.,et al.Genomics 71:222-234(2001).
Cuddeback S.M.,et al.J. Biol. Chem. 276:20559-20565(2001).
Modregger J.,et al.J. Biol. Chem. 278:4160-4167(2003).
Seki N.,et al.DNA Res. 4:345-349(1997).
Lai C.-H.,et al.Genome Res. 10:703-713(2000).