

**SENP8 Antibody - middle region**  
**Rabbit Polyclonal Antibody**  
**Catalog # AI16071****Specification**

---

**SENP8 Antibody - middle region - Product Information**

Application	<b>WB</b>
Primary Accession	<a href="#">O96LD8</a>
Other Accession	<a href="#">XP_005254214</a>
Reactivity	<b>Human</b>
Host	<b>Rabbit</b>
Clonality	<b>Polyclonal</b>
Calculated MW	<b>23kDa KDa</b>

**SENP8 Antibody - middle region - Additional Information****Gene ID** 123228**Alias Symbol** **SENP8, DEN1, NEDP1, PRSC2, FKSG8,**  
**Other Names**

Sentrin-specific protease 8, 3.4.22.68, Deneddylase-1, NEDD8-specific protease 1, Protease, cysteine 2, Sentrin/SUMO-specific protease SENP8, SENP8, DEN1, NEDP1, PRSC2

**Format**

Liquid. Purified antibody supplied in 1x PBS buffer with 0.09% (w/v) sodium azide and 2% sucrose.

**Reconstitution & Storage**Add 50  $\mu$ l of distilled water. Final Anti-SENP8 antibody concentration is 1 mg/ml in PBS buffer with 2% sucrose. For longer periods of storage, store at -20°C. Avoid repeat freeze-thaw cycles.**Precautions**

SENP8 Antibody - middle region is for research use only and not for use in diagnostic or therapeutic procedures.

**SENP8 Antibody - middle region - Protein Information****Name** SENP8**Synonyms** DEN1, NEDP1, PRSC2**Function**

Protease that catalyzes two essential functions in the NEDD8 pathway: processing of full-length NEDD8 to its mature form and deconjugation of NEDD8 from targeted proteins such as cullins or p53.

**Tissue Location**

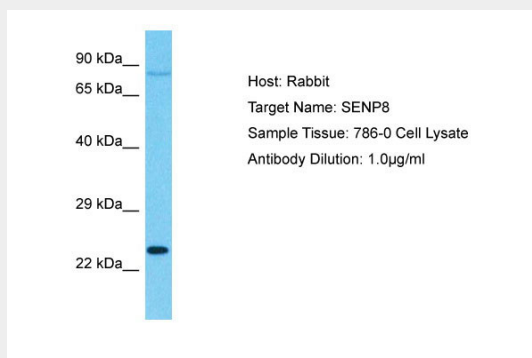
Broadly expressed, with highest levels in kidney and pancreas.

## SENP8 Antibody - middle region - Protocols

Provided below are standard protocols that you may find useful for product applications.

- [Western Blot](#)
- [Blocking Peptides](#)
- [Dot Blot](#)
- [Immunohistochemistry](#)
- [Immunofluorescence](#)
- [Immunoprecipitation](#)
- [Flow Cytometry](#)
- [Cell Culture](#)

## SENP8 Antibody - middle region - Images



Host: Rabbit  
Target Name: SENP8  
Sample Tissue: 786-0 Whole cell lysate  
s  
Antibody Dilution: 1.0µg/ml

## SENP8 Antibody - middle region - Background

Protease that catalyzes two essential functions in the NEDD8 pathway: processing of full-length NEDD8 to its mature form and deconjugation of NEDD8 from targeted proteins such as cullins or p53.

## SENP8 Antibody - middle region - References

Mendoza H.M., et al. J. Biol. Chem. 278:25637-25643(2003).  
Gong L., et al. Submitted (SEP-2000) to the EMBL/GenBank/DDBJ databases.  
Wang Y.-G., et al. Submitted (SEP-2000) to the EMBL/GenBank/DDBJ databases.  
Wu K., et al. J. Biol. Chem. 278:28882-28891(2003).  
Gan-Erdene T., et al. J. Biol. Chem. 278:28892-28900(2003).