

**CDK10 Antibody - C-terminal region**  
**Rabbit Polyclonal Antibody**  
**Catalog # AI16062**

**Specification**

---

**CDK10 Antibody - C-terminal region - Product Information**

Application	WB
Primary Accession	<a href="#">Q15131</a>
Reactivity	Human
Host	Rabbit
Clonality	Polyclonal
Calculated MW	39kDa KDa

**CDK10 Antibody - C-terminal region - Additional Information**

**Gene ID** 8558

**Alias Symbol** CDK10,  
**Other Names**

Cyclin-dependent kinase 10, 2.7.11.22, Cell division protein kinase 10, Serine/threonine-protein kinase PISSLRE, CDK10

**Format**

Liquid. Purified antibody supplied in 1x PBS buffer with 0.09% (w/v) sodium azide and 2% sucrose.

**Reconstitution & Storage**

Add 50  $\mu$ l of distilled water. Final Anti-CDK10 antibody concentration is 1 mg/ml in PBS buffer with 2% sucrose. For longer periods of storage, store at -20°C. Avoid repeat freeze-thaw cycles.

**Precautions**

CDK10 Antibody - C-terminal region is for research use only and not for use in diagnostic or therapeutic procedures.

**CDK10 Antibody - C-terminal region - Protein Information**

**Name** CDK10

**Function**

Cyclin-dependent kinase that phosphorylates the transcription factor ETS2 (in vitro) and positively controls its proteasomal degradation (in cells) (PubMed:[24218572](http://www.uniprot.org/citations/24218572)). Involved in the regulation of actin cytoskeleton organization through the phosphorylation of actin dynamics regulators such as PKN2. Is a negative regulator of ciliogenesis through phosphorylation of PKN2 and promotion of RhoA signaling (PubMed:[27104747](http://www.uniprot.org/citations/27104747)).

**Cellular Location**

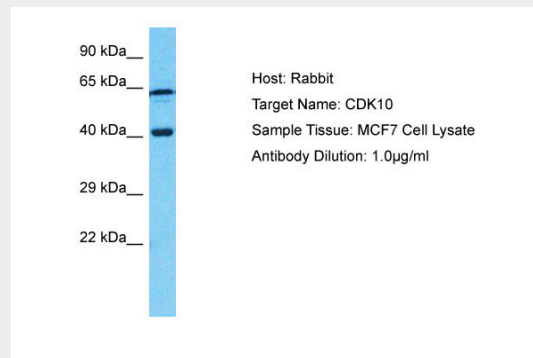
Cytoplasm, cytoskeleton, cilium basal body

## CDK10 Antibody - C-terminal region - Protocols

Provided below are standard protocols that you may find useful for product applications.

- [Western Blot](#)
- [Blocking Peptides](#)
- [Dot Blot](#)
- [Immunohistochemistry](#)
- [Immunofluorescence](#)
- [Immunoprecipitation](#)
- [Flow Cytometry](#)
- [Cell Culture](#)

## CDK10 Antibody - C-terminal region - Images



Host: Rabbit  
Target Name: CDK10  
Sample Tissue: MCF7 Whole cell lysate  
s  
Antibody Dilution: 1.0µg/ml

## CDK10 Antibody - C-terminal region - Background

Cyclin-dependent kinase that phosphorylates the transcription factor ETS2 (in vitro) and positively controls its proteasomal degradation (in cells).

## CDK10 Antibody - C-terminal region - References

- Grana X., et al. *Oncogene* 9:2097-2103(1994).  
Grana X., et al. Submitted (JUN-2000) to the EMBL/GenBank/DDBJ databases.  
Brambilla R., et al. *Oncogene* 9:3037-3041(1994).  
Crawford J., et al. *Genomics* 56:90-97(1999).  
Ota T., et al. *Nat. Genet.* 36:40-45(2004).