

RPS18 Antibody - C-terminal region
Rabbit Polyclonal Antibody
Catalog # AI16050

Specification

RPS18 Antibody - C-terminal region - Product Information

Application	WB
Primary Accession	P62269
Other Accession	NM_022551 , NP_072045
Reactivity	Human, Mouse, Rat, Rabbit, Horse, Yeast, Bovine, Neisseria Gonorrhoeae, Guinea Pig, Dog
Predicted	Human, Mouse, Rat, Rabbit, Pig, Horse, Yeast, Bovine, Neisseria Gonorrhoeae, Guinea Pig, Dog
Host	Rabbit
Clonality	Polyclonal
Calculated MW	17kDa KDa

RPS18 Antibody - C-terminal region - Additional Information

Gene ID 6222

Alias Symbol D6S218E, HKE3, KE-3, KE3, S18
Other Names
40S ribosomal protein S18, Ke-3, Ke3, RPS18, D6S218E

Format

Liquid. Purified antibody supplied in 1x PBS buffer with 0.09% (w/v) sodium azide and 2% sucrose.

Reconstitution & Storage

Add 50 μ l of distilled water. Final Anti-RPS18 antibody concentration is 1 mg/ml in PBS buffer with 2% sucrose. For longer periods of storage, store at -20°C. Avoid repeat freeze-thaw cycles.

Precautions

RPS18 Antibody - C-terminal region is for research use only and not for use in diagnostic or therapeutic procedures.

RPS18 Antibody - C-terminal region - Protein Information

Name RPS18

Synonyms D6S218E

Function

Component of the small ribosomal subunit. The ribosome is a large ribonucleoprotein complex responsible for the synthesis of proteins in the cell.

Cellular Location

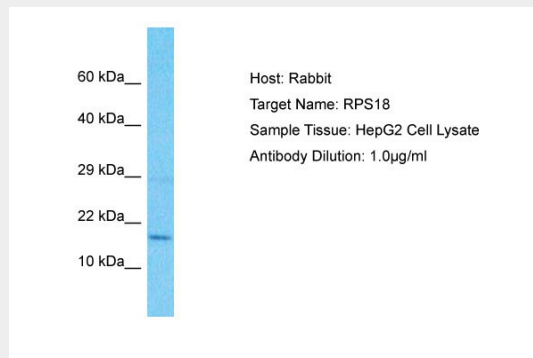
Cytoplasm.

RPS18 Antibody - C-terminal region - Protocols

Provided below are standard protocols that you may find useful for product applications.

- [Western Blot](#)
- [Blocking Peptides](#)
- [Dot Blot](#)
- [Immunohistochemistry](#)
- [Immunofluorescence](#)
- [Immunoprecipitation](#)
- [Flow Cytometry](#)
- [Cell Culture](#)

RPS18 Antibody - C-terminal region - Images



Host: Rabbit
Target Name: RPS18
Sample Tissue: HepG2 Whole cell lysate
s
Antibody Dilution: 1.0µg/ml

RPS18 Antibody - C-terminal region - Background

Located at the top of the head of the 40S subunit, it contacts several helices of the 18S rRNA.

RPS18 Antibody - C-terminal region - References

Chassin D., et al. Nucleic Acids Res. 21:745-745(1993).
Mungall A.J., et al. Nature 425:805-811(2003).
Mural R.J., et al. Submitted (JUL-2005) to the EMBL/GenBank/DDBJ databases.
Bienvenut W.V., et al. Submitted (NOV-2006) to UniProtKB.
Vladimirov S.N., et al. Eur. J. Biochem. 239:144-149(1996).