

**MATK Antibody - C-terminal region**  
**Rabbit Polyclonal Antibody**  
**Catalog # AI16043****Specification**

---

**MATK Antibody - C-terminal region - Product Information**

Application	WB
Primary Accession	<a href="#">P42679</a>
Other Accession	<a href="#">NP_647612</a>
Reactivity	Human
Host	Rabbit
Clonality	Polyclonal
Calculated MW	55kDa KDa

**MATK Antibody - C-terminal region - Additional Information****Gene ID** 4145**Alias Symbol** MATK, CTK, HYL,**Other Names**

Megakaryocyte-associated tyrosine-protein kinase, 2.7.10.2, CSK homologous kinase, CHK, Hematopoietic consensus tyrosine-lacking kinase, Protein kinase HYL, Tyrosine-protein kinase CTK, MATK, CTK, HYL

**Format**

Liquid. Purified antibody supplied in 1x PBS buffer with 0.09% (w/v) sodium azide and 2% sucrose.

**Reconstitution & Storage**Add 50  $\mu$ l of distilled water. Final Anti-MATK antibody concentration is 1 mg/ml in PBS buffer with 2% sucrose. For longer periods of storage, store at -20°C. Avoid repeat freeze-thaw cycles.**Precautions**

MATK Antibody - C-terminal region is for research use only and not for use in diagnostic or therapeutic procedures.

**MATK Antibody - C-terminal region - Protein Information****Name** MATK**Synonyms** CTK, HYL**Function**

Could play a significant role in the signal transduction of hematopoietic cells. May regulate tyrosine kinase activity of SRC- family members in brain by specifically phosphorylating their C-terminal regulatory tyrosine residue which acts as a negative regulatory site. It may play an inhibitory role in the control of T- cell proliferation.

**Cellular Location**

Cytoplasm. Membrane. Note=In platelets, 90% of MATK localizes to the membrane fraction, and translocates to the cytoskeleton upon thrombin stimulation

#### Tissue Location

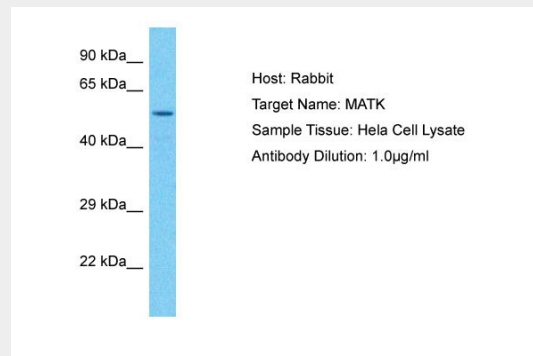
Expressed in various myeloid cell lines, detected in brain and lung

#### MATK Antibody - C-terminal region - Protocols

Provided below are standard protocols that you may find useful for product applications.

- [Western Blot](#)
- [Blocking Peptides](#)
- [Dot Blot](#)
- [Immunohistochemistry](#)
- [Immunofluorescence](#)
- [Immunoprecipitation](#)
- [Flow Cytometry](#)
- [Cell Culture](#)

#### MATK Antibody - C-terminal region - Images



Host: Rabbit  
Target Name: MATK  
Sample Tissue: Hela Whole cell lysate  
s  
Antibody Dilution: 1.0µg/ml

#### MATK Antibody - C-terminal region - Background

Could play a significant role in the signal transduction of hematopoietic cells. May regulate tyrosine kinase activity of SRC-family members in brain by specifically phosphorylating their C-terminal regulatory tyrosine residue which acts as a negative regulatory site. It may play an inhibitory role in the control of T-cell proliferation.

#### MATK Antibody - C-terminal region - References

Sakano S., et al. *Oncogene* 9:1155-1161(1994).  
Bennett B.D., et al. *J. Biol. Chem.* 269:1068-1074(1994).  
Avraham S., et al. *J. Biol. Chem.* 270:1833-1842(1995).  
Ota T., et al. *Nat. Genet.* 36:40-45(2004).  
Bechtel S., et al. *BMC Genomics* 8:399-399(2007).