

**PROX1 Antibody - middle region**  
**Rabbit Polyclonal Antibody**  
**Catalog # AI16042**

**Specification**

---

**PROX1 Antibody - middle region - Product Information**

Application	<b>WB</b>
Primary Accession	<a href="#">O92786</a>
Other Accession	<a href="#">NP_002754</a>
Reactivity	<b>Human</b>
Host	<b>Rabbit</b>
Clonality	<b>Polyclonal</b>
Calculated MW	<b>81kDa KDa</b>

**PROX1 Antibody - middle region - Additional Information**

**Gene ID** 5629

**Alias Symbol** **PROX1,**  
**Other Names**  
Prospero homeobox protein 1, Homeobox prospero-like protein PROX1, PROX-1, PROX1

**Format**

Liquid. Purified antibody supplied in 1x PBS buffer with 0.09% (w/v) sodium azide and 2% sucrose.

**Reconstitution & Storage**

Add 50  $\mu$ l of distilled water. Final Anti-PROX1 antibody concentration is 1 mg/ml in PBS buffer with 2% sucrose. For longer periods of storage, store at -20°C. Avoid repeat freeze-thaw cycles.

**Precautions**

PROX1 Antibody - middle region is for research use only and not for use in diagnostic or therapeutic procedures.

**PROX1 Antibody - middle region - Protein Information**

**Name** PROX1

**Function**

Transcription factor involved in developmental processes such as cell fate determination, gene transcriptional regulation and progenitor cell regulation in a number of organs. Plays a critical role in embryonic development and functions as a key regulatory protein in neurogenesis and the development of the heart, eye lens, liver, pancreas and the lymphatic system. Involved in the regulation of the circadian rhythm. Represses: transcription of the retinoid-related orphan receptor ROR $\gamma$ , transcriptional activator activity of RORA and ROR $\gamma$  and the expression of RORA/G-target genes including core clock components: BMAL1, NPAS2 and CRY1 and metabolic genes: AVPR1A and ELOVL3.

**Cellular Location**

Nucleus {ECO:0000250|UniProtKB:P48437}. Note=RORG promotes its nuclear localization.  
{ECO:0000250|UniProtKB:P48437}

### Tissue Location

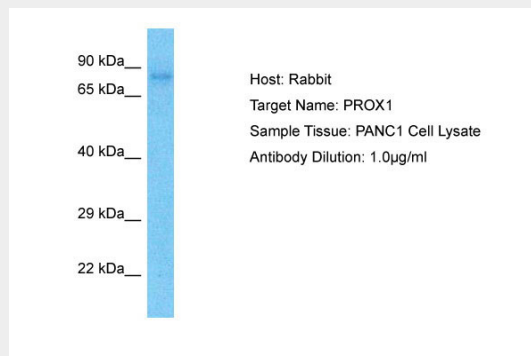
Most actively expressed in the developing lens. Detected also in embryonic brain, lung, liver and kidney. In adult, it is more abundant in heart and liver than in brain, skeletal muscle, kidney and pancreas.

### PROX1 Antibody - middle region - Protocols

Provided below are standard protocols that you may find useful for product applications.

- [Western Blot](#)
- [Blocking Peptides](#)
- [Dot Blot](#)
- [Immunohistochemistry](#)
- [Immunofluorescence](#)
- [Immunoprecipitation](#)
- [Flow Cytometry](#)
- [Cell Culture](#)

### PROX1 Antibody - middle region - Images



Host: Rabbit  
Target Name: PROX1  
Sample Tissue: PANC1 Whole cell lysate  
s  
Antibody Dilution: 1.0µg/ml

### PROX1 Antibody - middle region - Background

Transcription factor involved in developmental processes such as cell fate determination, gene transcriptional regulation and progenitor cell regulation in a number of organs. Plays a critical role in embryonic development and functions as a key regulatory protein in neurogenesis and the development of the heart, eye lens, liver, pancreas and the lymphatic system. Involved in the regulation of the circadian rhythm. Represses: transcription of the retinoid-related orphan receptor RORG, transcriptional activator activity of RORA and RORG and the expression of RORA/G-target genes including core clock components: ARNTL/BMAL1, NPAS2 and CRY1 and metabolic genes: AVPR1A and ELOVL3.

### PROX1 Antibody - middle region - References

Zinovieva R.D.,et al.Genomics 35:517-522(1996).  
Ota T.,et al.Nat. Genet. 36:40-45(2004).  
Gregory S.G.,et al.Nature 441:315-321(2006).  
Mural R.J.,et al.Submitted (SEP-2005) to the EMBL/GenBank/DDBJ databases.  
Elsir T.,et al.Cancer Metastasis Rev. 31:793-805(2012).