

**MAP2 Antibody - N-terminal region**  
**Rabbit Polyclonal Antibody**  
**Catalog # AI16038**

**Specification**

---

**MAP2 Antibody - N-terminal region - Product Information**

Application	WB
Primary Accession	<a href="#">P11137</a>
Reactivity	Human
Host	Rabbit
Clonality	Polyclonal
Calculated MW	200kDa KDa

**MAP2 Antibody - N-terminal region - Additional Information**

**Gene ID** 4133

**Alias Symbol** MAP2,  
**Other Names**  
Microtubule-associated protein 2, MAP-2, MAP2

**Format**

Liquid. Purified antibody supplied in 1x PBS buffer with 0.09% (w/v) sodium azide and 2% sucrose.

**Reconstitution & Storage**

Add 50  $\mu$ l of distilled water. Final Anti-MAP2 antibody concentration is 1 mg/ml in PBS buffer with 2% sucrose. For longer periods of storage, store at -20°C. Avoid repeat freeze-thaw cycles.

**Precautions**

MAP2 Antibody - N-terminal region is for research use only and not for use in diagnostic or therapeutic procedures.

**MAP2 Antibody - N-terminal region - Protein Information**

**Name** MAP2

**Function**

The exact function of MAP2 is unknown but MAPs may stabilize the microtubules against depolymerization. They also seem to have a stiffening effect on microtubules.

**Cellular Location**

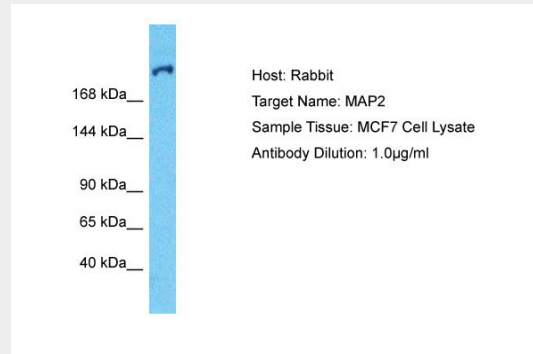
Cytoplasm, cytoskeleton. Cell projection, dendrite {ECO:0000250|UniProtKB:P20357}

**MAP2 Antibody - N-terminal region - Protocols**

Provided below are standard protocols that you may find useful for product applications.

- [Western Blot](#)
- [Blocking Peptides](#)
- [Dot Blot](#)
- [Immunohistochemistry](#)
- [Immunofluorescence](#)
- [Immunoprecipitation](#)
- [Flow Cytometry](#)
- [Cell Culture](#)

### MAP2 Antibody - N-terminal region - Images



Host: Rabbit  
Target Name: MAP2  
Sample Tissue: MCF7 Whole Cell lysates  
Antibody Dilution: 1.0µg/ml

### MAP2 Antibody - N-terminal region - Background

The exact function of MAP2 is unknown but MAPs may stabilize the microtubules against depolymerization. They also seem to have a stiffening effect on microtubules.

### MAP2 Antibody - N-terminal region - References

Price R., et al. Submitted (SEP-1993) to the EMBL/GenBank/DDBJ databases.  
Albala J.S., et al. Gene 136:377-378(1993).  
Hillier L.W., et al. Nature 434:724-731(2005).  
Mural R.J., et al. Submitted (JUL-2005) to the EMBL/GenBank/DDBJ databases.  
Dammerman M., et al. J. Neurosci. Res. 24:487-495(1989).