

TBX20 Antibody - C-terminal region
Rabbit Polyclonal Antibody
Catalog # AI16029

Specification

TBX20 Antibody - C-terminal region - Product Information

Application	WB
Primary Accession	O9UMR3
Reactivity	Human, Mouse, Rat, Rabbit, Pig, Horse, Bovine, Guinea Pig, Dog
Predicted	Human, Mouse, Rat, Rabbit, Pig, Horse, Bovine, Guinea Pig, Dog
Host	Rabbit
Clonality	Polyclonal
Calculated MW	49kDa KDa

TBX20 Antibody - C-terminal region - Additional Information

Gene ID 57057

Other Names

T-box transcription factor TBX20, T-box protein 20, TBX20

Format

Liquid. Purified antibody supplied in 1x PBS buffer with 0.09% (w/v) sodium azide and 2% sucrose.

Reconstitution & Storage

Add 50 ul of distilled water. Final anti-TBX20 antibody concentration is 1 mg/ml in PBS buffer with 2% sucrose. For longer periods of storage, store at 20°C. Avoid repeat freeze-thaw cycles.

Precautions

TBX20 Antibody - C-terminal region is for research use only and not for use in diagnostic or therapeutic procedures.

TBX20 Antibody - C-terminal region - Protein Information

Name TBX20

Function

Acts as a transcriptional activator and repressor required for cardiac development and may have key roles in the maintenance of functional and structural phenotypes in adult heart.

Cellular Location

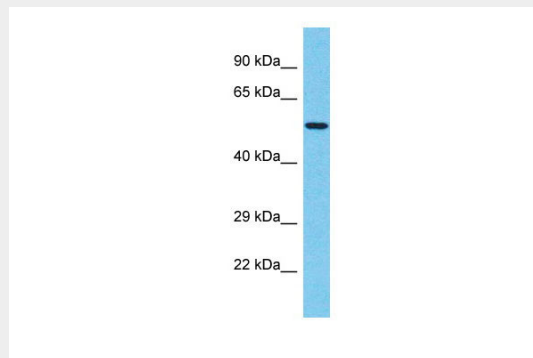
Nucleus {ECO:0000255|PROSITE-ProRule:PRU00201}.

TBX20 Antibody - C-terminal region - Protocols

Provided below are standard protocols that you may find useful for product applications.

- [Western Blot](#)
- [Blocking Peptides](#)
- [Dot Blot](#)
- [Immunohistochemistry](#)
- [Immunofluorescence](#)
- [Immunoprecipitation](#)
- [Flow Cytometry](#)
- [Cell Culture](#)

TBX20 Antibody - C-terminal region - Images



Host: Rabbit
Target Name: TBX20
Sample Tissue: Jurkat Whole cell lysate
S
Antibody Dilution: 1.0µg/ml

TBX20 Antibody - C-terminal region - Background

Acts as a transcriptional activator and repressor required for cardiac development and may have key roles in the maintenance of functional and structural phenotypes in adult heart.

TBX20 Antibody - C-terminal region - References

Toenjes M.,et al.Submitted (SEP-2006) to the EMBL/GenBank/DDBJ databases.
Rieder M.J.,et al.Submitted (MAR-2010) to the EMBL/GenBank/DDBJ databases.
Hillier L.W.,et al.Nature 424:157-164(2003).
Scherer S.W.,et al.Science 300:767-772(2003).
Meins M.,et al.Genomics 67:317-332(2000).