

**WDR86 Antibody - N-terminal region**  
**Rabbit Polyclonal Antibody**  
**Catalog # AI15998****Specification**

---

**WDR86 Antibody - N-terminal region - Product Information**

Application	<b>WB</b>
Primary Accession	<a href="#">Q86TI4</a>
Other Accession	<a href="#">NM_198285</a> , <a href="#">NP_938026</a>
Reactivity	<b>Human, Mouse, Rat, Rabbit, Horse, Yeast, Bovine, Neisseria Gonorrhoeae, Guinea Pig, Dog</b>
Predicted	<b>Human, Mouse, Rat, Rabbit, Pig, Horse, Yeast, Bovine, Neisseria Gonorrhoeae, Guinea Pig, Dog</b>
Host	<b>Rabbit</b>
Clonality	<b>Polyclonal</b>
Calculated MW	<b>41kDa KDa</b>

**WDR86 Antibody - N-terminal region - Additional Information****Gene ID** 349136**Other Names**

WD repeat-containing protein 86, WDR86

**Format**

Liquid. Purified antibody supplied in 1x PBS buffer with 0.09% (w/v) sodium azide and 2% sucrose.

**Reconstitution & Storage**Add 50  $\mu$ l of distilled water. Final Anti-WDR86 antibody concentration is 1 mg/ml in PBS buffer with 2% sucrose. For longer periods of storage, store at -20°C. Avoid repeat freeze-thaw cycles.**Precautions**

WDR86 Antibody - N-terminal region is for research use only and not for use in diagnostic or therapeutic procedures.

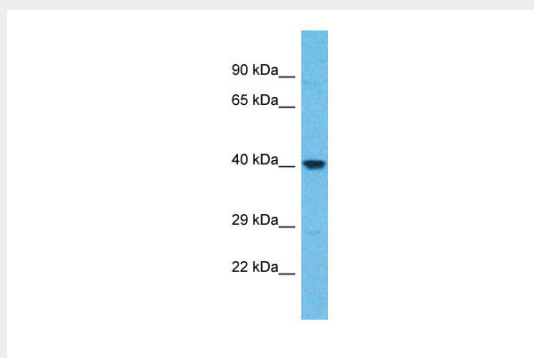
**WDR86 Antibody - N-terminal region - Protein Information****Name** WDR86**WDR86 Antibody - N-terminal region - Protocols**

Provided below are standard protocols that you may find useful for product applications.

- [Western Blot](#)

- [Blocking Peptides](#)
- [Dot Blot](#)
- [Immunohistochemistry](#)
- [Immunofluorescence](#)
- [Immunoprecipitation](#)
- [Flow Cytometry](#)
- [Cell Culture](#)

#### **WDR86 Antibody - N-terminal region - Images**



Host: Rabbit  
Target Name: WDR86  
Sample Tissue: Hela Whole cell lysate  
S  
Antibody Dilution: 1.0µg/ml

#### **WDR86 Antibody - N-terminal region - References**

Ota T.,et al.Nat. Genet. 36:40-45(2004).  
Hillier L.W.,et al.Nature 424:157-164(2003).  
Mural R.J.,et al.Submitted (FEB-2011) to the EMBL/GenBank/DDBJ databases.