

PMPCA Antibody - C-terminal region
Rabbit Polyclonal Antibody
Catalog # AI15953

Specification

PMPCA Antibody - C-terminal region - Product Information

Application	WB
Primary Accession	Q10713
Other Accession	NM_015160 , NP_055975
Reactivity	Human, Mouse, Rat, Horse, Bovine, Guinea Pig, Dog
Predicted	Human, Mouse, Rat, Pig, Horse, Bovine, Guinea Pig, Dog
Host	Rabbit
Clonality	Polyclonal
Calculated MW	54kDa kDa

PMPCA Antibody - C-terminal region - Additional Information

Gene ID 23203

Alias Symbol Alpha-MPP, INPP5E

Other Names

Mitochondrial-processing peptidase subunit alpha, 3.4.24.64, Alpha-MPP, P-55, PMPCA, INPP5E, KIAA0123, MPPA

Format

Liquid. Purified antibody supplied in 1x PBS buffer with 0.09% (w/v) sodium azide and 2% sucrose.

Reconstitution & Storage

Add 50 µl of distilled water. Final Anti-PMPCA antibody concentration is 1 mg/ml in PBS buffer with 2% sucrose. For longer periods of storage, store at -20°C. Avoid repeat freeze-thaw cycles.

Precautions

PMPCA Antibody - C-terminal region is for research use only and not for use in diagnostic or therapeutic procedures.

PMPCA Antibody - C-terminal region - Protein Information

Name PMPCA

Synonyms INPP5E, KIAA0123, MPPA

Function

Substrate recognition and binding subunit of the essential mitochondrial processing protease (MPP), which cleaves the mitochondrial sequence off newly imported precursor proteins.

Cellular Location

Mitochondrion matrix {ECO:0000250|UniProtKB:P20069}. Mitochondrion inner membrane

Tissue Location

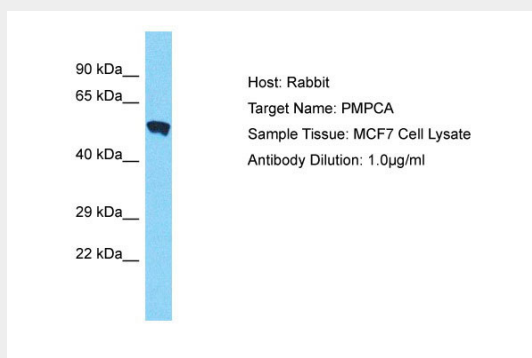
Ubiquitously expressed with highest expression in fetal tissues and adult brain, cerebellum and cerebellar vermis

PMPCA Antibody - C-terminal region - Protocols

Provided below are standard protocols that you may find useful for product applications.

- [Western Blot](#)
- [Blocking Peptides](#)
- [Dot Blot](#)
- [Immunohistochemistry](#)
- [Immunofluorescence](#)
- [Immunoprecipitation](#)
- [Flow Cytometry](#)
- [Cell Culture](#)

PMPCA Antibody - C-terminal region - Images



Host: Rabbit

Target Name: PMPCA

Sample Tissue: MCF7 Whole cell lysate

s

Antibody Dilution: 1.0µg/ml PMPCA is supported by BioGPS gene expression data to be expressed in MCF7

PMPCA Antibody - C-terminal region - Background

Cleaves presequences (transit peptides) from mitochondrial protein precursors.

PMPCA Antibody - C-terminal region - References

Nagase T., et al. DNA Res. 2:37-43(1995).

Nagase T., et al. DNA Res. 2:167-174(1995).

Ota T., et al. Nat. Genet. 36:40-45(2004).

Humphray S.J., et al. Nature 429:369-374(2004).

Mural R.J., et al. Submitted (JUL-2005) to the EMBL/GenBank/DDBJ databases.