

NBPF16 Antibody - N-terminal region
Rabbit Polyclonal Antibody
Catalog # AI15896**Specification**

NBPF16 Antibody - N-terminal region - Product Information

| | |
|-------------------|------------------------|
| Application | WB |
| Primary Accession | Q5SXJ2 |
| Reactivity | Human |
| Predicted | Human |
| Host | Rabbit |
| Clonality | Polyclonal |
| Calculated MW | 73kDa KDa |

NBPF16 Antibody - N-terminal region - Additional Information**Other Names**

Neuroblastoma breakpoint family member 16, NBPF16

Format

Liquid. Purified antibody supplied in 1x PBS buffer with 0.09% (w/v) sodium azide and 2% sucrose.

Reconstitution & Storage

Add 50 ul of distilled water. Final anti-NBPF16 antibody concentration is 1 mg/ml in PBS buffer with 2% sucrose. For longer periods of storage, store at 20°C. Avoid repeat freeze-thaw cycles.

Precautions

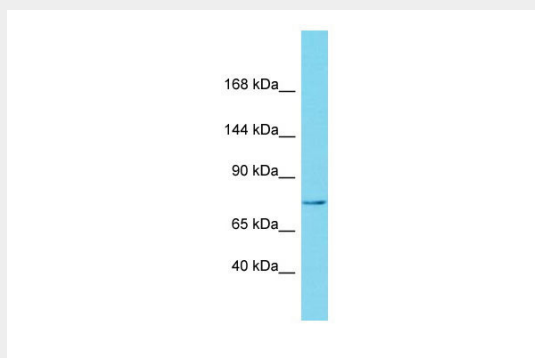
NBPF16 Antibody - N-terminal region is for research use only and not for use in diagnostic or therapeutic procedures.

NBPF16 Antibody - N-terminal region - Protein Information**NBPF16 Antibody - N-terminal region - Protocols**

Provided below are standard protocols that you may find useful for product applications.

- [Western Blot](#)
- [Blocking Peptides](#)
- [Dot Blot](#)
- [Immunohistochemistry](#)
- [Immunofluorescence](#)
- [Immunoprecipitation](#)
- [Flow Cytometry](#)
- [Cell Culture](#)

NBPF16 Antibody - N-terminal region - Images



Host: Rabbit
Target Name: NBPF16
Sample Tissue: Placenta lysates
Antibody Dilution: 1.0 μ g/ml

NBPF16 Antibody - N-terminal region - References

Gregory S.G., et al. Nature 441:315-321(2006).