

**KLHL33 Antibody - N-terminal region**  
**Rabbit Polyclonal Antibody**  
**Catalog # AI15868****Specification**

---

**KLHL33 Antibody - N-terminal region - Product Information**

Application	WB
Primary Accession	<a href="#">A6NCF5</a>
Other Accession	<a href="#">NM_001109997</a> , <a href="#">NP_001103467</a>
Reactivity	Human, Mouse, Rat, Rabbit, Pig, Horse, Bovine, Guinea Pig
Predicted	Human, Mouse, Rat, Rabbit, Pig, Horse, Bovine, Guinea Pig
Host	Rabbit
Clonality	Polyclonal
Calculated MW	57kDa KDa

**KLHL33 Antibody - N-terminal region - Additional Information****Gene ID** 123103**Other Names**

Kelch-like protein 33, KLHL33

**Format**

Liquid. Purified antibody supplied in 1x PBS buffer with 0.09% (w/v) sodium azide and 2% sucrose.

**Reconstitution & Storage**

Add 50 ul of distilled water. Final anti-KLHL33 antibody concentration is 1 mg/ml in PBS buffer with 2% sucrose. For longer periods of storage, store at 20°C. Avoid repeat freeze-thaw cycles.

**Precautions**

KLHL33 Antibody - N-terminal region is for research use only and not for use in diagnostic or therapeutic procedures.

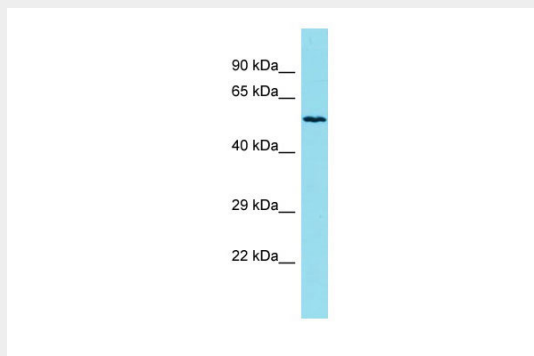
**KLHL33 Antibody - N-terminal region - Protein Information****Name** KLHL33**KLHL33 Antibody - N-terminal region - Protocols**

Provided below are standard protocols that you may find useful for product applications.

- [Western Blot](#)
- [Blocking Peptides](#)
- [Dot Blot](#)

- [Immunohistochemistry](#)
- [Immunofluorescence](#)
- [Immunoprecipitation](#)
- [Flow Cytometry](#)
- [Cell Culture](#)

#### **KLHL33 Antibody - N-terminal region - Images**



Host: Rabbit  
Target Name: KLHL33  
Sample Tissue: HepG2 Whole cell lysate  
s  
Antibody Dilution: 1.0µg/ml

#### **KLHL33 Antibody - N-terminal region - References**

Heilig R., et al. Nature 421:601-607(2003).