

IQCF6 Antibody - C-terminal region
Rabbit Polyclonal Antibody
Catalog # AI15856**Specification**

IQCF6 Antibody - C-terminal region - Product Information

Application	WB
Primary Accession	A8MYZ5
Reactivity	Human, Rat, Rabbit, Bovine, Guinea Pig, Dog
Predicted	Human, Rat, Rabbit, Pig, Bovine, Guinea Pig, Dog
Host	Rabbit
Clonality	Polyclonal
Calculated MW	14kDa KDa

IQCF6 Antibody - C-terminal region - Additional Information**Gene ID** 440956**Other Names**

IQ domain-containing protein F6, IQCF6

Format

Liquid. Purified antibody supplied in 1x PBS buffer with 0.09% (w/v) sodium azide and 2% sucrose.

Reconstitution & Storage

Add 50 ul of distilled water. Final anti-IQCF6 antibody concentration is 1 mg/ml in PBS buffer with 2% sucrose. For longer periods of storage, store at 20°C. Avoid repeat freeze-thaw cycles.

Precautions

IQCF6 Antibody - C-terminal region is for research use only and not for use in diagnostic or therapeutic procedures.

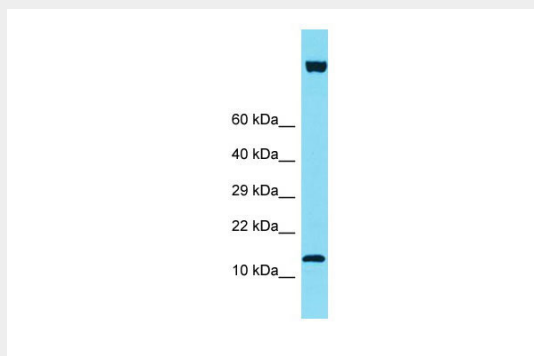
IQCF6 Antibody - C-terminal region - Protein Information**Name** IQCF6**IQCF6 Antibody - C-terminal region - Protocols**

Provided below are standard protocols that you may find useful for product applications.

- [Western Blot](#)
- [Blocking Peptides](#)
- [Dot Blot](#)
- [Immunohistochemistry](#)

- [Immunofluorescence](#)
- [Immunoprecipitation](#)
- [Flow Cytometry](#)
- [Cell Culture](#)

IQCF6 Antibody - C-terminal region - Images



Host: Rabbit
Target Name: IQCF6
Sample Tissue: HT1080 Whole cell lysate
s
Antibody Dilution: 1.0µg/ml

IQCF6 Antibody - C-terminal region - References

Muzny D.M., et al. Nature 440:1194-1198(2006).