

**GPR89A Antibody - C-terminal region**  
**Rabbit Polyclonal Antibody**  
**Catalog # AI15844**

**Specification**

---

**GPR89A Antibody - C-terminal region - Product Information**

Application	WB
Primary Accession	<a href="#">B7ZA06</a>
Other Accession	<a href="#">NM_016334</a> , <a href="#">NP_057418</a>
Reactivity	Human, Mouse, Rat, Horse, Bovine, Guinea Pig, Dog
Predicted	Human, Mouse, Rat, Pig, Horse, Bovine, Guinea Pig, Dog
Host	Rabbit
Clonality	Polyclonal
Calculated MW	53kDa KDa

**GPR89A Antibody - C-terminal region - Additional Information**

**Gene ID** 51463;653519

**Alias Symbol** **GPHR, GPR89, SH120**

**Other Names**

Golgi pH regulator A, Protein GPR89A, Putative MAPK-activating protein PM01, Putative NF-kappa-B-activating protein 90, GPR89A, GPHRA, GPR89, SH120

**Format**

Liquid. Purified antibody supplied in 1x PBS buffer with 0.09% (w/v) sodium azide and 2% sucrose.

**Reconstitution & Storage**

Add 50 ul of distilled water. Final anti-GPR89A antibody concentration is 1 mg/ml in PBS buffer with 2% sucrose. For longer periods of storage, store at 20°C. Avoid repeat freeze-thaw cycles.

**Precautions**

GPR89A Antibody - C-terminal region is for research use only and not for use in diagnostic or therapeutic procedures.

**GPR89A Antibody - C-terminal region - Protein Information**

**Name** GPR89A ([HGNC:31984](#))

**Synonyms** GPHRA, GPR89, SH120

**Function**

Voltage-gated channel that enables the transfer of monoatomic anions such as iodide, chloride, bromide and fluoride which may function in counter-ion conductance and participates in Golgi acidification (PubMed: <http://www.uniprot.org/citations/18794847> target="\_blank">18794847</a>). Plays a role in lymphocyte development, probably by acting as

a RABL3 effector in hematopoietic cells (By similarity).

#### Cellular Location

Golgi apparatus membrane; Multi-pass membrane protein

#### Tissue Location

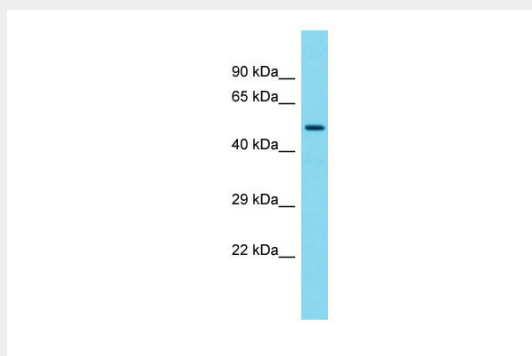
Ubiquitous..

### GPR89A Antibody - C-terminal region - Protocols

Provided below are standard protocols that you may find useful for product applications.

- [Western Blot](#)
- [Blocking Peptides](#)
- [Dot Blot](#)
- [Immunohistochemistry](#)
- [Immunofluorescence](#)
- [Immunoprecipitation](#)
- [Flow Cytometry](#)
- [Cell Culture](#)

### GPR89A Antibody - C-terminal region - Images



Host: Rabbit

Target Name: GPR89A

Sample Tissue: Fetal Heart lysates

Antibody Dilution: 1.0µg/ml

### GPR89A Antibody - C-terminal region - Background

Voltage dependent anion channel required for acidification and functions of the Golgi apparatus that may function in counter-ion conductance.

### GPR89A Antibody - C-terminal region - References

Lai C.-H.,et al.Genome Res. 10:703-713(2000).

Corominas R.,et al.Nat. Commun. 5:3650-3650(2014).

Clark H.F.,et al.Genome Res. 13:2265-2270(2003).

Matsuda A.,et al.Oncogene 22:3307-3318(2003).

Kalnine N.,et al.Submitted (MAY-2003) to the EMBL/GenBank/DDBJ databases.