

FOLH1B Antibody - middle region
Rabbit Polyclonal Antibody
Catalog # AI15838

Specification

FOLH1B Antibody - middle region - Product Information

Application	WB
Primary Accession	O9HBA9
Other Accession	NM_153696 , NP_710163
Reactivity	Human, Mouse, Rat, Rabbit, Horse, Bovine, Guinea Pig, Dog
Predicted	Human, Mouse, Rat, Rabbit, Pig, Horse, Bovine, Guinea Pig, Dog
Host	Rabbit
Clonality	Polyclonal
Calculated MW	50kDa KDa

FOLH1B Antibody - middle region - Additional Information

Alias Symbol	FOLH2, FOLHP, GCP3, GCPIII, PSM, PSMA-LIKE, PSMAL
--------------	---

Other Names

Putative N-acetylated-alpha-linked acidic dipeptidase, NAALADase, 3.4.-.-, Cell growth-inhibiting gene 26 protein, Prostate-specific membrane antigen-like protein, Putative folate hydrolase 1B, FOLH1B, PSMAL

Format

Liquid. Purified antibody supplied in 1x PBS buffer with 0.09% (w/v) sodium azide and 2% sucrose.

Reconstitution & Storage

Add 50 ul of distilled water. Final anti-FOLH1B antibody concentration is 1 mg/ml in PBS buffer with 2% sucrose. For longer periods of storage, store at 20°C. Avoid repeat freeze-thaw cycles.

Precautions

FOLH1B Antibody - middle region is for research use only and not for use in diagnostic or therapeutic procedures.

FOLH1B Antibody - middle region - Protein Information

Name FOLH1B

Synonyms PSMAL

Function

Has both folate hydrolase and N-acetylated-alpha-linked- acidic dipeptidase (NAALADase) activity.

Cellular Location

Cytoplasm.

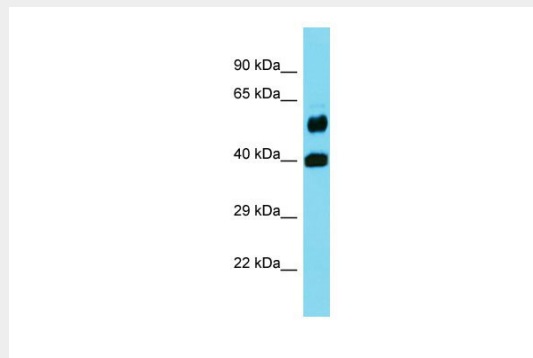
Tissue Location

Kidney and liver. Not expressed in the prostate.

FOLH1B Antibody - middle region - Protocols

Provided below are standard protocols that you may find useful for product applications.

- [Western Blot](#)
- [Blocking Peptides](#)
- [Dot Blot](#)
- [Immunohistochemistry](#)
- [Immunofluorescence](#)
- [Immunoprecipitation](#)
- [Flow Cytometry](#)
- [Cell Culture](#)

FOLH1B Antibody - middle region - Images

Host: Rabbit

Target Name: FOLH1B

Sample Tissue: Fetal Brain lysates

Antibody Dilution: 1.0µg/ml

FOLH1B Antibody - middle region - Background

Has both folate hydrolase and N-acetylated-alpha-linked- acidic dipeptidase (NAALADase) activity.

FOLH1B Antibody - middle region - References

O'Keefe D.S., et al. Prostate 58:200-210(2004).

Kim J.W., et al. Submitted (FEB-2004) to the EMBL/GenBank/DDBJ databases.