

**DUX4L4 Antibody - N-terminal region**  
**Rabbit Polyclonal Antibody**  
**Catalog # AI15807****Specification**

---

**DUX4L4 Antibody - N-terminal region - Product Information**

Application	<b>WB</b>
Primary Accession	<a href="#">POCJ87</a>
Reactivity	<b>Human, Rat, Pig</b>
Predicted	<b>Human, Rat, Pig</b>
Host	<b>Rabbit</b>
Clonality	<b>Polyclonal</b>
Calculated MW	<b>46kDa KDa</b>

**DUX4L4 Antibody - N-terminal region - Additional Information****Other Names**

Double homeobox protein 4-like protein 4, DUX4L4

**Format**

Liquid. Purified antibody supplied in 1x PBS buffer with 0.09% (w/v) sodium azide and 2% sucrose.

**Reconstitution & Storage**

Add 50 ul of distilled water. Final anti-DUX4L4 antibody concentration is 1 mg/ml in PBS buffer with 2% sucrose. For longer periods of storage, store at 20°C. Avoid repeat freeze-thaw cycles.

**Precautions**

DUX4L4 Antibody - N-terminal region is for research use only and not for use in diagnostic or therapeutic procedures.

**DUX4L4 Antibody - N-terminal region - Protein Information**

**Name** DUX4L4

**Function**

May be involved in transcriptional regulation.

**Cellular Location**

Nucleus {ECO:0000255|PROSITE-ProRule:PRU00108}.

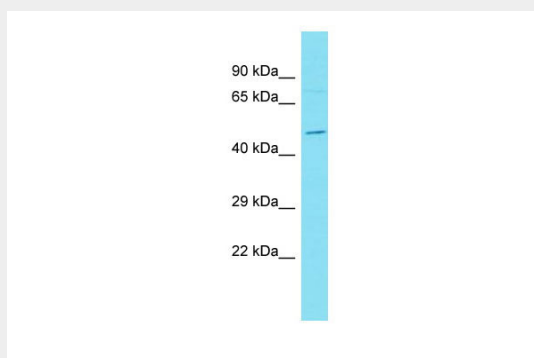
**DUX4L4 Antibody - N-terminal region - Protocols**

Provided below are standard protocols that you may find useful for product applications.

- [Western Blot](#)
- [Blocking Peptides](#)

- [Dot Blot](#)
- [Immunohistochemistry](#)
- [Immunofluorescence](#)
- [Immunoprecipitation](#)
- [Flow Cytometry](#)
- [Cell Culture](#)

#### **DUX4L4 Antibody - N-terminal region - Images**



Host: Rabbit

Target Name: DUX4L4

Sample Tissue: ACHN Whole cell lysate

S

Antibody Dilution: 1.0µg/ml

#### **DUX4L4 Antibody - N-terminal region - Background**

May be involved in transcriptional regulation.

#### **DUX4L4 Antibody - N-terminal region - References**

Hillier L.W., et al. Nature 434:724-731(2005).