

CT47B1 Antibody - C-terminal region
Rabbit Polyclonal Antibody
Catalog # AI15797**Specification**

CT47B1 Antibody - C-terminal region - Product Information

Application	WB
Primary Accession	POC2W7
Other Accession	NM_001145718 , NP_001139190
Reactivity	Human
Predicted	Human
Host	Rabbit
Clonality	Polyclonal
Calculated MW	31kDa KDa

CT47B1 Antibody - C-terminal region - Additional Information**Gene ID** 643311**Alias Symbol** **CT47.13, CT47A13****Other Names**

Cancer/testis antigen 47B, Cancer/testis antigen 47.13, CT47.13, CT47B1, CT47.13

Format

Liquid. Purified antibody supplied in 1x PBS buffer with 0.09% (w/v) sodium azide and 2% sucrose.

Reconstitution & Storage

Add 50 ul of distilled water. Final anti-CT47B1 antibody concentration is 1 mg/ml in PBS buffer with 2% sucrose. For longer periods of storage, store at 20°C. Avoid repeat freeze-thaw cycles.

Precautions

CT47B1 Antibody - C-terminal region is for research use only and not for use in diagnostic or therapeutic procedures.

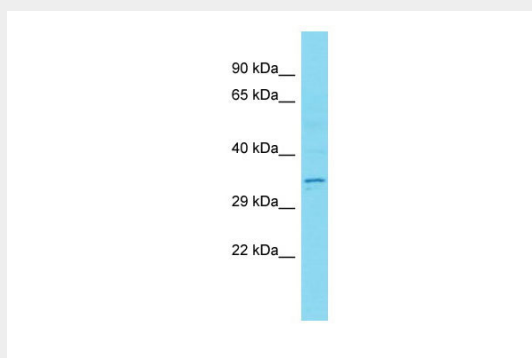
CT47B1 Antibody - C-terminal region - Protein Information**Name** CT47B1 ([HGNC:33293](#))**Synonyms** CT47.13**CT47B1 Antibody - C-terminal region - Protocols**

Provided below are standard protocols that you may find useful for product applications.

- [Western Blot](#)
- [Blocking Peptides](#)

- [Dot Blot](#)
- [Immunohistochemistry](#)
- [Immunofluorescence](#)
- [Immunoprecipitation](#)
- [Flow Cytometry](#)
- [Cell Culture](#)

CT47B1 Antibody - C-terminal region - Images



Host: Rabbit
Target Name: CT47B1
Sample Tissue: Placenta lysates
Antibody Dilution: 1.0 μ g/ml

CT47B1 Antibody - C-terminal region - References

Ross M.T., et al. Nature 434:325-337(2005).
Chen Y.-T., et al. Genes Chromosomes Cancer 45:392-400(2006).