

**OR52D1 Antibody - C-terminal region**  
**Rabbit Polyclonal Antibody**  
**Catalog # AI15770**

**Specification**

---

**OR52D1 Antibody - C-terminal region - Product Information**

|                   |  |
|-------------------|--|
| Application       | WB   |
| Primary Accession | <a href="#">O9H346</a>   |
| Other Accession   | <a href="#">NM_001005163NP_001005163</a>                       |
| Reactivity        | Human, Mouse, Rat, Rabbit, Horse, Bovine, Guinea Pig, Dog      |
| Predicted         | Human, Mouse, Rat, Rabbit, Pig, Horse, Bovine, Guinea Pig, Dog |
| Host              | Rabbit   |
| Clonality         | Polyclonal   |
| Calculated MW     | 34kDa KDa  |

**OR52D1 Antibody - C-terminal region - Additional Information**

**Gene ID** 390066

**Alias Symbol** OR11-43

**Other Names**

Olfactory receptor 52D1, Odorant receptor HOR5'beta14, Olfactory receptor OR11-43, OR52D1

**Format**

Liquid. Purified antibody supplied in 1x PBS buffer with 0.09% (w/v) sodium azide and 2% sucrose.

**Reconstitution & Storage**

Add 50 ul of distilled water. Final anti-OR52D1 antibody concentration is 1 mg/ml in PBS buffer with 2% sucrose. For longer periods of storage, store at 20°C. Avoid repeat freeze-thaw cycles.

**Precautions**

OR52D1 Antibody - C-terminal region is for research use only and not for use in diagnostic or therapeutic procedures.

**OR52D1 Antibody - C-terminal region - Protein Information**

**Name** OR52D1

**Function**

Odorant receptor.

**Cellular Location**

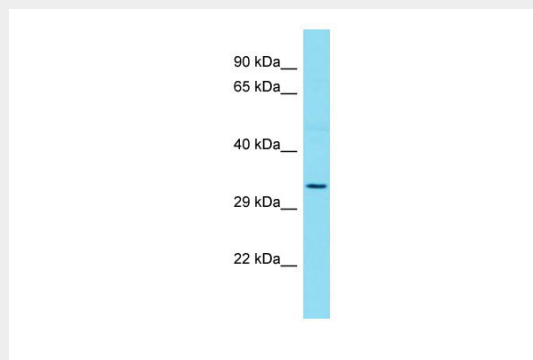
Cell membrane; Multi-pass membrane protein.

## OR52D1 Antibody - C-terminal region - Protocols

Provided below are standard protocols that you may find useful for product applications.

- [Western Blot](#)
- [Blocking Peptides](#)
- [Dot Blot](#)
- [Immunohistochemistry](#)
- [Immunofluorescence](#)
- [Immunoprecipitation](#)
- [Flow Cytometry](#)
- [Cell Culture](#)

## OR52D1 Antibody - C-terminal region - Images



Host: Rabbit  
Target Name: OR52D1  
Sample Tissue: Hela Whole cell lysate  
s  
Antibody Dilution: 1.0µg/ml

## OR52D1 Antibody - C-terminal region - Background

Odorant receptor.

## OR52D1 Antibody - C-terminal region - References

- Bulger M., et al. Proc. Natl. Acad. Sci. U.S.A. 97:14560-14565(2000).  
Mural R.J., et al. Submitted (SEP-2005) to the EMBL/GenBank/DDBJ databases.  
Malnic B., et al. Proc. Natl. Acad. Sci. U.S.A. 101:2584-2589(2004).  
Malnic B., et al. Proc. Natl. Acad. Sci. U.S.A. 101:7205-7205(2004).