

NUGGC Antibody - C-terminal region
Rabbit Polyclonal Antibody
Catalog # AI15769**Specification**

NUGGC Antibody - C-terminal region - Product Information

Application	WB
Primary Accession	Q68CJ6
Other Accession	NM_001010906NP_001010906
Reactivity	Human, Rabbit, Pig, Horse, Bovine, Dog
Predicted	Human, Rabbit, Pig, Horse, Bovine, Dog
Host	Rabbit
Clonality	Polyclonal
Calculated MW	91kDa KDa

NUGGC Antibody - C-terminal region - Additional Information**Gene ID** 389643**Alias Symbol** C8orf80, SLIP-GC**Other Names**

Nuclear GTPase SLIP-GC, 3.6.1.-, Speckled-like pattern in the germinal center, NUGGC, C8orf80

Format

Liquid. Purified antibody supplied in 1x PBS buffer with 0.09% (w/v) sodium azide and 2% sucrose.

Reconstitution & Storage

Add 50 ul of distilled water. Final anti-NUGGC antibody concentration is 1 mg/ml in PBS buffer with 2% sucrose. For longer periods of storage, store at 20°C. Avoid repeat freeze-thaw cycles.

Precautions

NUGGC Antibody - C-terminal region is for research use only and not for use in diagnostic or therapeutic procedures.

NUGGC Antibody - C-terminal region - Protein Information**Name** NUGGC**Synonyms** C8orf80**Function**

Nuclear GTPase found in germinal center B-cells, where it may inhibit function of the activation-induced cytidine deaminase AICDA (PubMed:19734146). Reduces somatic hypermutation in B-cells which may enhance genome stability (By similarity).

Cellular Location

Nucleus speckle.

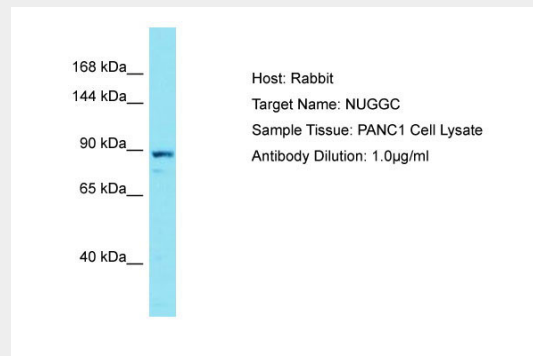
Tissue Location

Expressed in germinal center B-cell and in lymphomas derived from germinal center B-cell

NUGGC Antibody - C-terminal region - Protocols

Provided below are standard protocols that you may find useful for product applications.

- [Western Blot](#)
- [Blocking Peptides](#)
- [Dot Blot](#)
- [Immunohistochemistry](#)
- [Immunofluorescence](#)
- [Immunoprecipitation](#)
- [Flow Cytometry](#)
- [Cell Culture](#)

NUGGC Antibody - C-terminal region - Images

Host: Rabbit
Target Name: NUGGC
Sample Tissue: PANC1 Whole cell lysate
s
Antibody Dilution: 1.0µg/ml

NUGGC Antibody - C-terminal region - Background

Plays a role as replication-related GTPase protein in germinal center B-cell.

NUGGC Antibody - C-terminal region - References

Nusbaum C., et al. Nature 439:331-335(2006).
Yamada S., et al. Oncogene 23:5901-5911(2004).
Ota T., et al. Nat. Genet. 36:40-45(2004).
Richter K., et al. J. Biol. Chem. 284:30652-30661(2009).