

C9orf116 Antibody - N-terminal region
Rabbit Polyclonal Antibody
Catalog # AI15731**Specification**

C9orf116 Antibody - N-terminal region - Product Information

Application	WB
Primary Accession	Q5BN46
Other Accession	NM_001048265 , NP_001041730
Reactivity	Human, Mouse, Rat, Pig, Bovine, Guinea Pig
Predicted	Human, Mouse, Rat, Pig, Bovine, Guinea Pig
Host	Rabbit
Clonality	Polyclonal
Calculated MW	14kDa kDa

C9orf116 Antibody - N-terminal region - Additional Information**Gene ID** 138162**Alias Symbol** PIERCE1, RbEST47**Other Names**

UPF0691 protein C9orf116, p53-induced expression in RB-null cells protein 1, Pierce1, C9orf116

Format

Liquid. Purified antibody supplied in 1x PBS buffer with 0.09% (w/v) sodium azide and 2% sucrose.

Reconstitution & Storage

Add 50 ul of distilled water. Final anti-C9orf116 antibody concentration is 1 mg/ml in PBS buffer with 2% sucrose. For longer periods of storage, store at 20°C. Avoid repeat freeze-thaw cycles.

Precautions

C9orf116 Antibody - N-terminal region is for research use only and not for use in diagnostic or therapeutic procedures.

C9orf116 Antibody - N-terminal region - Protein Information**Name** PIERCE1 ([HGNC:28435](#))**Function**

Microtubule inner protein involved in the attachment of outer dynein arms (ODAs) to dynein-decorated doublet microtubules (DMTs) in cilia axoneme, which is required for motile cilia beating (PubMed:36191189). Functions at the initial step of left-right asymmetry specification of the visceral organs.

Cellular Location

Cytoplasm, cytoskeleton, cilium axoneme

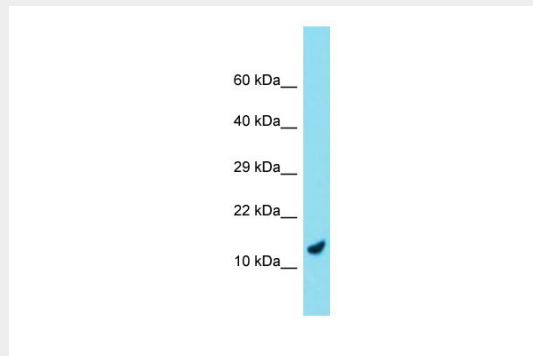
Tissue Location

Expressed in airway epithelial cells.

C9orf116 Antibody - N-terminal region - Protocols

Provided below are standard protocols that you may find useful for product applications.

- [Western Blot](#)
- [Blocking Peptides](#)
- [Dot Blot](#)
- [Immunohistochemistry](#)
- [Immunofluorescence](#)
- [Immunoprecipitation](#)
- [Flow Cytometry](#)
- [Cell Culture](#)

C9orf116 Antibody - N-terminal region - Images

Host: Rabbit

Target Name: C9orf116

Sample Tissue: Placenta lysates

Antibody Dilution: 1.0µg/ml

C9orf116 Antibody - N-terminal region - References

Sung Y.H., et al. Mol. Cells 24:409-415(2007).

Humphray S.J., et al. Nature 429:369-374(2004).