

C15orf23 Antibody - N-terminal region
Rabbit Polyclonal Antibody
Catalog # AI15706**Specification**

C15orf23 Antibody - N-terminal region - Product Information

Application	WB
Primary Accession	O9Y448
Other Accession	NM_033286 , NP_150628
Reactivity	Human
Predicted	Human
Host	Rabbit
Clonality	Polyclonal
Calculated MW	35kDa KDa

C15orf23 Antibody - N-terminal region - Additional Information**Gene ID** 90417**Alias Symbol** **SKAP, TRAF4AF1, C15orf23****Other Names**

Small kinetochore-associated protein, SKAP, Kinetochore-localized astrin-binding protein, Kinastrin, Kinetochore-localized astrin/SPAG5-binding protein, TRAF4-associated factor 1, KNSTRN (http://www.genenames.org/cgi-bin/gene_symbol_report?hgnc_id=30767)
target="_blank">HGNC:30767)

Format

Liquid. Purified antibody supplied in 1x PBS buffer with 0.09% (w/v) sodium azide and 2% sucrose.

Reconstitution & Storage

Add 50 ul of distilled water. Final anti-C15orf23 antibody concentration is 1 mg/ml in PBS buffer with 2% sucrose. For longer periods of storage, store at 20°C. Avoid repeat freeze-thaw cycles.

Precautions

C15orf23 Antibody - N-terminal region is for research use only and not for use in diagnostic or therapeutic procedures.

C15orf23 Antibody - N-terminal region - Protein Information**Name** KNSTRN ([HGNC:30767](#))**Function**

Essential component of the mitotic spindle required for faithful chromosome segregation and progression into anaphase (PubMed:<http://www.uniprot.org/citations/19667759>)
target="_blank">19667759). Promotes the metaphase-to-anaphase transition and is required for chromosome alignment, normal timing of sister chromatid segregation, and maintenance of spindle pole architecture (PubMed:<http://www.uniprot.org/citations/19667759>)
target="_blank">19667759, PubMed:<http://www.uniprot.org/citations/22110139>)

target="_blank">22110139). The astrin (SPAG5)-kinastrin (SKAP) complex promotes stable microtubule-kinetochore attachments (PubMed:21402792). Required for kinetochore oscillations and dynamics of microtubule plus-ends during live cell mitosis, possibly by forming a link between spindle microtubule plus-ends and mitotic chromosomes to achieve faithful cell division (PubMed:23035123). May be involved in UV-induced apoptosis via its interaction with PRPF19; however, these results need additional evidences (PubMed:24718257).

Cellular Location

Nucleus. Chromosome, centromere, kinetochore. Cytoplasm, cytoskeleton, spindle pole. Cytoplasm, cytoskeleton, microtubule organizing center. Note=Colocalizes with microtubules around centrosomes in prophase and with the mitotic spindle at prometaphase and metaphase. From late prometaphase to anaphase, is highly concentrated on kinetochores. Located at the kinetochore-microtubule interface. The astrin (SPAG5)-kinastrin (SKAP) complex localizes to the microtubule plus ends (PubMed:23035123)

Tissue Location

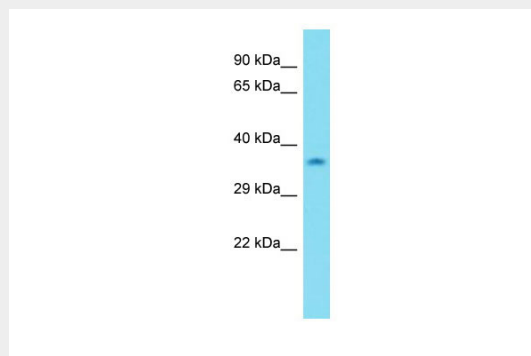
Widely expressed, including in skin.

C15orf23 Antibody - N-terminal region - Protocols

Provided below are standard protocols that you may find useful for product applications.

- [Western Blot](#)
- [Blocking Peptides](#)
- [Dot Blot](#)
- [Immunohistochemistry](#)
- [Immunofluorescence](#)
- [Immunoprecipitation](#)
- [Flow Cytometry](#)
- [Cell Culture](#)

C15orf23 Antibody - N-terminal region - Images



Host: Rabbit
Target Name: C15orf23
Sample Tissue: MDA-MB-435S Whole cell lysate
s
Antibody Dilution: 1.0µg/ml

C15orf23 Antibody - N-terminal region - References

Cai C.L.,et al.Submitted (JUN-2004) to the EMBL/GenBank/DDBJ databases.
Ota T.,et al.Nat. Genet. 36:40-45(2004).
Zody M.C.,et al.Nature 440:671-675(2006).
Li W.B.,et al.Submitted (JUL-2004) to the EMBL/GenBank/DDBJ databases.
Touji S.,et al.Submitted (DEC-1996) to the EMBL/GenBank/DDBJ databases.