

PPIL4 Antibody - C-terminal region
Rabbit Polyclonal Antibody
Catalog # AI15704

Specification

PPIL4 Antibody - C-terminal region - Product Information

Application	WB
Primary Accession	O8WUA2
Other Accession	NM_139126 , NP_624311
Reactivity	Human, Mouse, Rat, Rabbit, Pig, Horse, Bovine, Dog
Predicted	Human, Mouse, Rat, Rabbit, Pig, Horse, Bovine, Dog
Host	Rabbit
Clonality	Polyclonal
Calculated MW	57kDa KDa

PPIL4 Antibody - C-terminal region - Additional Information

Gene ID 85313

Alias Symbol **HDCME13P**
Other Names
Peptidyl-prolyl cis-trans isomerase-like 4, PPIase, 5.2.1.8, Cyclophilin-like protein PPIL4, Rotamase PPIL4, PPIL4

Format
Liquid. Purified antibody supplied in 1x PBS buffer with 0.09% (w/v) sodium azide and 2% sucrose.

Reconstitution & Storage
Add 50 ul of distilled water. Final anti-PPIL4 antibody concentration is 1 mg/ml in PBS buffer with 2% sucrose. For longer periods of storage, store at 20°C. Avoid repeat freeze-thaw cycles.

Precautions
PPIL4 Antibody - C-terminal region is for research use only and not for use in diagnostic or therapeutic procedures.

PPIL4 Antibody - C-terminal region - Protein Information

Name PPIL4

Function
PPIases accelerate the folding of proteins. It catalyzes the cis-trans isomerization of proline imidic peptide bonds in oligopeptides (By similarity).

Cellular Location
Nucleus.

Tissue Location

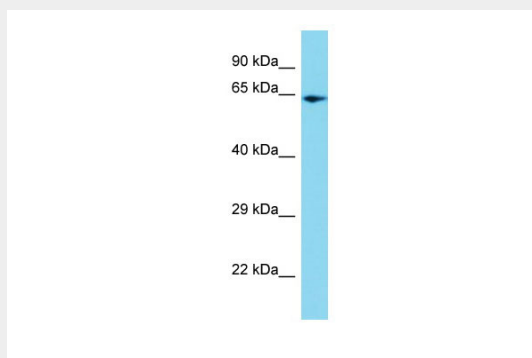
Abundantly expressed in kidney but has a ubiquitously low expression pattern in other adult tissues

PPIL4 Antibody - C-terminal region - Protocols

Provided below are standard protocols that you may find useful for product applications.

- [Western Blot](#)
- [Blocking Peptides](#)
- [Dot Blot](#)
- [Immunohistochemistry](#)
- [Immunofluorescence](#)
- [Immunoprecipitation](#)
- [Flow Cytometry](#)
- [Cell Culture](#)

PPIL4 Antibody - C-terminal region - Images



Host: Rabbit

Target Name: PPIL4

Sample Tissue: HepG2 Whole cell lysate

s

Antibody Dilution: 1.0µg/ml

PPIL4 Antibody - C-terminal region - References

Zeng L., et al. Cytogenet. Cell Genet. 95:43-47(2001).

Ota T., et al. Nat. Genet. 36:40-45(2004).

Bechtel S., et al. BMC Genomics 8:399-399(2007).

Mungall A.J., et al. Nature 425:805-811(2003).

Mural R.J., et al. Submitted (SEP-2005) to the EMBL/GenBank/DDBJ databases.