

ARHGEF39 Antibody - N-terminal region
Rabbit Polyclonal Antibody
Catalog # AI15699

Specification

ARHGEF39 Antibody - N-terminal region - Product Information

| | |
|-------------------|--|
| Application | WB |
| Primary Accession | Q8N4T4 |
| Other Accession | NM_032818 , NP_116207 |
| Reactivity | Human, Mouse, Rat, Rabbit, Pig, Horse, Bovine, Guinea Pig, Dog |
| Predicted | Human, Mouse, Rat, Rabbit, Pig, Horse, Bovine, Guinea Pig, Dog |
| Host | Rabbit |
| Clonality | Polyclonal |
| Calculated MW | 38kDa KDa |

ARHGEF39 Antibody - N-terminal region - Additional Information

Gene ID 84904

Alias Symbol **RP11-331F9.7**
Other Names
Rho guanine nucleotide exchange factor 39, ARHGEF39, C9orf100

Format

Liquid. Purified antibody supplied in 1x PBS buffer with 0.09% (w/v) sodium azide and 2% sucrose.

Reconstitution & Storage

Add 50 ul of distilled water. Final anti-ARHGEF39 antibody concentration is 1 mg/ml in PBS buffer with 2% sucrose. For longer periods of storage, store at 20°C. Avoid repeat freeze-thaw cycles.

Precautions

ARHGEF39 Antibody - N-terminal region is for research use only and not for use in diagnostic or therapeutic procedures.

ARHGEF39 Antibody - N-terminal region - Protein Information

Name ARHGEF39

Synonyms C9orf100

Function

Promotes cell proliferation.

Cellular Location

Cell membrane.

Tissue Location

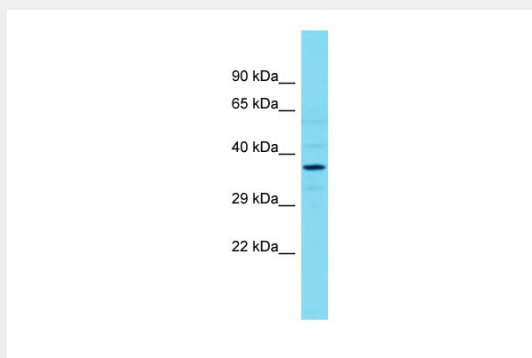
Strongly expressed in hepatocellular carcinoma (HCC) compared with their non-cancerous counterparts

ARHGEF39 Antibody - N-terminal region - Protocols

Provided below are standard protocols that you may find useful for product applications.

- [Western Blot](#)
- [Blocking Peptides](#)
- [Dot Blot](#)
- [Immunohistochemistry](#)
- [Immunofluorescence](#)
- [Immunoprecipitation](#)
- [Flow Cytometry](#)
- [Cell Culture](#)

ARHGEF39 Antibody - N-terminal region - Images



Host: Rabbit
Target Name: ARHGEF39
Sample Tissue: RPMI-8226 Whole cell lysate
s
Antibody Dilution: 1.0µg/ml

ARHGEF39 Antibody - N-terminal region - References

Makela H.M.A., et al. Submitted (SEP-2003) to the EMBL/GenBank/DDBJ databases.
Ota T., et al. Nat. Genet. 36:40-45(2004).
Humphray S.J., et al. Nature 429:369-374(2004).
Wang H., et al. Mol. Med. Report. 5:1169-1174(2012).