

**ARMT1 Antibody - N-terminal region**  
**Rabbit Polyclonal Antibody**  
**Catalog # AI15673****Specification**

---

**ARMT1 Antibody - N-terminal region - Product Information**

Application	WB
Primary Accession	<a href="#">O9H993</a>
Other Accession	<a href="#">NM_024573</a> , <a href="#">NP_078849</a>
Reactivity	Human, Mouse, Rat, Rabbit, Dog, Guinea Pig, Horse
Predicted	Human, Mouse, Rat, Rabbit, Pig, Dog, Guinea Pig, Horse
Host	Rabbit
Clonality	Polyclonal
Calculated MW	51kDa KDa

**ARMT1 Antibody - N-terminal region - Additional Information****Gene ID** 79624**Other Names**

UPF0364 protein C6orf211, C6orf211

**Format**

Liquid. Purified antibody supplied in 1x PBS buffer with 0.09% (w/v) sodium azide and 2% sucrose.

**Reconstitution & Storage**

Add 50 ul of distilled water. Final anti-ARMT1 antibody concentration is 1 mg/ml in PBS buffer with 2% sucrose. For longer periods of storage, store at 20°C. Avoid repeat freeze-thaw cycles.

**Precautions**

ARMT1 Antibody - N-terminal region is for research use only and not for use in diagnostic or therapeutic procedures.

**ARMT1 Antibody - N-terminal region - Protein Information****Name** ARMT1 {ECO:0000303|PubMed:25732820, ECO:0000312|HGNC:HGNC:17872}**Function**

Metal-dependent phosphatase that shows phosphatase activity against several substrates, including fructose-1-phosphate and fructose-6-phosphate (By similarity). Its preference for fructose-1-phosphate, a strong glycosylating agent that causes DNA damage rather than a canonical yeast metabolite, suggests a damage-control function in hexose phosphate metabolism (By similarity). Has also been shown to have O-methyltransferase activity that methylates glutamate residues of target proteins to form gamma-glutamyl methyl ester residues (PubMed:&lt;a href="http://www.uniprot.org/citations/25732820" target="\_blank"&gt;25732820&lt;/a&gt;). Possibly methylates PCNA, suggesting it is involved in the DNA damage response (PubMed:&lt;a

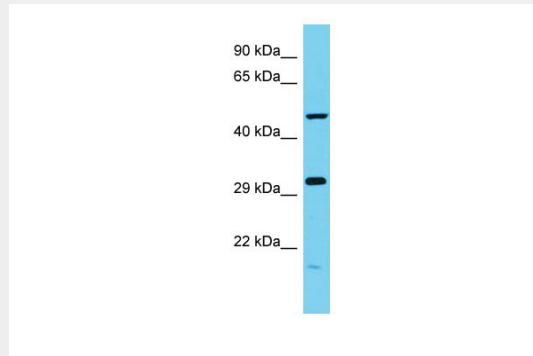
href="http://www.uniprot.org/citations/25732820" target="\_blank">25732820</a>).

### ARMT1 Antibody - N-terminal region - Protocols

Provided below are standard protocols that you may find useful for product applications.

- [Western Blot](#)
- [Blocking Peptides](#)
- [Dot Blot](#)
- [Immunohistochemistry](#)
- [Immunofluorescence](#)
- [Immunoprecipitation](#)
- [Flow Cytometry](#)
- [Cell Culture](#)

### ARMT1 Antibody - N-terminal region - Images



Host: Rabbit

Target Name: ARMT1

Sample Tissue: MCF7 Whole cell lysate

s

Antibody Dilution: 1.0µg/ml ARMT1 is supported by BioGPS gene expression data to be expressed in MCF7

### ARMT1 Antibody - N-terminal region - References

- Ota T., et al. Nat. Genet. 36:40-45(2004).  
Mungall A.J., et al. Nature 425:805-811(2003).  
Bechtel S., et al. BMC Genomics 8:399-399(2007).  
Gauci S., et al. Anal. Chem. 81:4493-4501(2009).  
Choudhary C., et al. Science 325:834-840(2009).