

CECR5 Antibody - C-terminal region
Rabbit Polyclonal Antibody
Catalog # AI15634

Specification

CECR5 Antibody - C-terminal region - Product Information

Application	WB
Primary Accession	O9BXW7
Other Accession	NM_033070 , NP_149061
Reactivity	Human
Predicted	Human
Host	Rabbit
Clonality	Polyclonal
Calculated MW	47kDa KDa

CECR5 Antibody - C-terminal region - Additional Information

Gene ID 27440

Other Names

Cat eye syndrome critical region protein 5, CECR5

Format

Liquid. Purified antibody supplied in 1x PBS buffer with 0.09% (w/v) sodium azide and 2% sucrose.

Reconstitution & Storage

Add 50 ul of distilled water. Final anti-CECR5 antibody concentration is 1 mg/ml in PBS buffer with 2% sucrose. For longer periods of storage, store at 20°C. Avoid repeat freeze-thaw cycles.

Precautions

CECR5 Antibody - C-terminal region is for research use only and not for use in diagnostic or therapeutic procedures.

CECR5 Antibody - C-terminal region - Protein Information

Name HDHD5 ([HGNC:1843](#))

Tissue Location

Widely expressed.

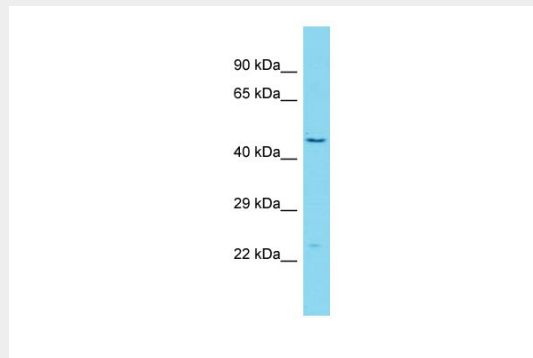
CECR5 Antibody - C-terminal region - Protocols

Provided below are standard protocols that you may find useful for product applications.

- [Western Blot](#)
- [Blocking Peptides](#)

- [Dot Blot](#)
- [Immunohistochemistry](#)
- [Immunofluorescence](#)
- [Immunoprecipitation](#)
- [Flow Cytometry](#)
- [Cell Culture](#)

CECR5 Antibody - C-terminal region - Images



Host: Rabbit
Target Name: CECR5
Sample Tissue: HT1080 Whole cell lysate
s
Antibody Dilution: 1.0µg/ml

CECR5 Antibody - C-terminal region - References

Footz T.K., et al. *Genome Res.* 11:1053-1070(2001).
Ota T., et al. *Nat. Genet.* 36:40-45(2004).
Mural R.J., et al. Submitted (JUL-2005) to the EMBL/GenBank/DDBJ databases.
Burkard T.R., et al. *BMC Syst. Biol.* 5:17-17(2011).