

GPR162 Antibody - N-terminal region
Rabbit Polyclonal Antibody
Catalog # AI15617**Specification**

GPR162 Antibody - N-terminal region - Product Information

Application	WB
Primary Accession	Q16538
Other Accession	NM_019858 , NP_062832
Reactivity	Human, Mouse, Rat, Rabbit, Pig, Horse, Bovine, Dog
Predicted	Human, Mouse, Rat, Rabbit, Pig, Horse, Bovine, Dog
Host	Rabbit
Clonality	Polyclonal
Calculated MW	65kDa KDa

GPR162 Antibody - N-terminal region - Additional Information**Gene ID** 27239**Alias Symbol** **A-2, GRCA****Other Names**

Probable G-protein coupled receptor 162, Gene-rich cluster gene A protein, GPR162, GRCA

Format

Liquid. Purified antibody supplied in 1x PBS buffer with 0.09% (w/v) sodium azide and 2% sucrose.

Reconstitution & Storage

Add 50 ul of distilled water. Final anti-GPR162 antibody concentration is 1 mg/ml in PBS buffer with 2% sucrose. For longer periods of storage, store at 20°C. Avoid repeat freeze-thaw cycles.

Precautions

GPR162 Antibody - N-terminal region is for research use only and not for use in diagnostic or therapeutic procedures.

GPR162 Antibody - N-terminal region - Protein Information**Name** GPR162**Synonyms** GRCA**Function**

Orphan receptor.

Cellular Location

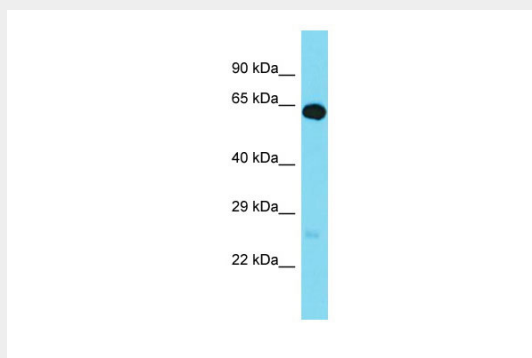
Cell membrane; Multi-pass membrane protein

GPR162 Antibody - N-terminal region - Protocols

Provided below are standard protocols that you may find useful for product applications.

- [Western Blot](#)
- [Blocking Peptides](#)
- [Dot Blot](#)
- [Immunohistochemistry](#)
- [Immunofluorescence](#)
- [Immunoprecipitation](#)
- [Flow Cytometry](#)
- [Cell Culture](#)

GPR162 Antibody - N-terminal region - Images



Host: Rabbit

Target Name: GPR162

Sample Tissue: Fetal Brain lysates

Antibody Dilution: 1.0 μ g/ml

GPR162 Antibody - N-terminal region - References

Ansari-Lari M.A., et al. Genome Res. 6:314-326(1996).

Ansari-Lari M.A., et al. Genome Res. 7:268-280(1997).

Totoki Y., et al. Submitted (MAR-2005) to the EMBL/GenBank/DDBJ databases.