

**FGFBP3 Antibody - C-terminal region**  
**Rabbit Polyclonal Antibody**  
**Catalog # AI15613****Specification**

---

**FGFBP3 Antibody - C-terminal region - Product Information**

Application	<b>WB</b>
Primary Accession	<a href="#">Q8TAT2</a>
Other Accession	<a href="#">NM_152429</a> , <a href="#">NP_689642</a>
Reactivity	<b>Human</b>
Predicted	<b>Human</b>
Host	<b>Rabbit</b>
Clonality	<b>Polyclonal</b>
Calculated MW	<b>28kDa KDa</b>

**FGFBP3 Antibody - C-terminal region - Additional Information****Gene ID** 143282**Alias Symbol** **C10orf13, FGF-BP3****Other Names**

Fibroblast growth factor-binding protein 3, FGF-BP3, FGF-binding protein 3, FGFBP-3, FGFBP3, C10orf13

**Format**

Liquid. Purified antibody supplied in 1x PBS buffer with 0.09% (w/v) sodium azide and 2% sucrose.

**Reconstitution & Storage**

Add 50 ul of distilled water. Final anti-FGFBP3 antibody concentration is 1 mg/ml in PBS buffer with 2% sucrose. For longer periods of storage, store at 20°C. Avoid repeat freeze-thaw cycles.

**Precautions**

FGFBP3 Antibody - C-terminal region is for research use only and not for use in diagnostic or therapeutic procedures.

**FGFBP3 Antibody - C-terminal region - Protein Information****Name** FGFBP3**Synonyms** C10orf13**Function**

Heparin-binding protein which binds to FGF2, prevents binding of FGF2 to heparin and probably inhibits immobilization of FGF2 on extracellular matrix glycosaminoglycans, allowing its release and subsequent activation of FGFR signaling which leads to increased vascular permeability.

**Cellular Location**

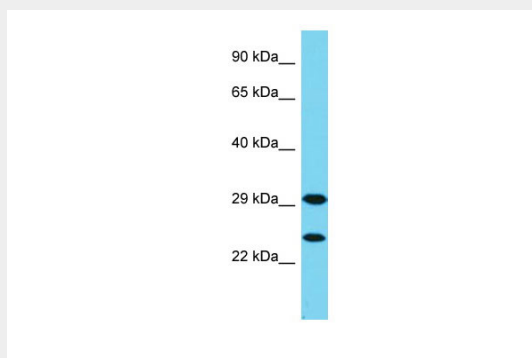
Secreted.

### FGFBP3 Antibody - C-terminal region - Protocols

Provided below are standard protocols that you may find useful for product applications.

- [Western Blot](#)
- [Blocking Peptides](#)
- [Dot Blot](#)
- [Immunohistochemistry](#)
- [Immunofluorescence](#)
- [Immunoprecipitation](#)
- [Flow Cytometry](#)
- [Cell Culture](#)

### FGFBP3 Antibody - C-terminal region - Images



Host: Rabbit

Target Name: FGFBP3

Sample Tissue: MCF7 Whole cell lysate

s

Antibody Dilution: 1.0µg/ml

### FGFBP3 Antibody - C-terminal region - References

Swift M.R., et al. Submitted (APR-2006) to the EMBL/GenBank/DDBJ databases.

Ota T., et al. Nat. Genet. 36:40-45(2004).

Otsuki T., et al. DNA Res. 12:117-126(2005).

Deloukas P., et al. Nature 429:375-381(2004).

Mural R.J., et al. Submitted (SEP-2005) to the EMBL/GenBank/DDBJ databases.