

CTAG1A Antibody - N-terminal region
Rabbit Polyclonal Antibody
Catalog # AI15591**Specification**

CTAG1A Antibody - N-terminal region - Product Information

Application	WB
Primary Accession	P78358
Other Accession	NM_139250 , NP_640343
Reactivity	Human
Predicted	Human
Host	Rabbit
Clonality	Polyclonal
Calculated MW	20kDa KDa

CTAG1A Antibody - N-terminal region - Additional Information**Gene ID** 1485;246100**Alias Symbol** **ESO1, LAGE2A****Other Names**

Cancer/testis antigen 1, Autoimmunogenic cancer/testis antigen NY-ESO-1, Cancer/testis antigen 6.1, CT6.1, L antigen family member 2, LAGE-2, CTAG1A, CTAG, CTAG1, ESO1, LAGE2, LAGE2A

Format

Liquid. Purified antibody supplied in 1x PBS buffer with 0.09% (w/v) sodium azide and 2% sucrose.

Reconstitution & Storage

Add 50 ul of distilled water. Final anti-CTAG1A antibody concentration is 1 mg/ml in PBS buffer with 2% sucrose. For longer periods of storage, store at 20°C. Avoid repeat freeze-thaw cycles.

Precautions

CTAG1A Antibody - N-terminal region is for research use only and not for use in diagnostic or therapeutic procedures.

CTAG1A Antibody - N-terminal region - Protein Information**Name** CTAG1A**Synonyms** CTAG, CTAG1, ESO1, LAGE2, LAGE2A**Cellular Location**

Cytoplasm.

Tissue Location

Expressed in testis and ovary and in a wide variety of cancers. Detected in uterine myometrium. Expressed from 18 weeks until birth in human fetal testis. In the adult testis, is strongly expressed in spermatogonia and in primary spermatocytes, but not in post-meiotic cells or in testicular

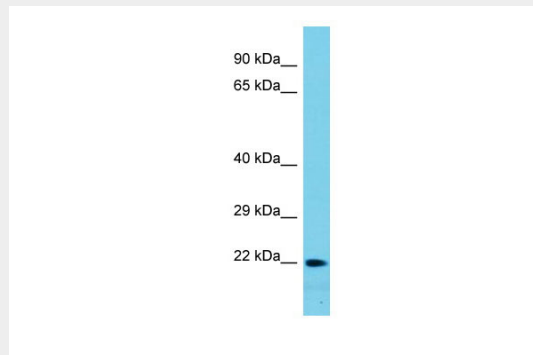
somatic cells (at protein level)

CTAG1A Antibody - N-terminal region - Protocols

Provided below are standard protocols that you may find useful for product applications.

- [Western Blot](#)
- [Blocking Peptides](#)
- [Dot Blot](#)
- [Immunohistochemistry](#)
- [Immunofluorescence](#)
- [Immunoprecipitation](#)
- [Flow Cytometry](#)
- [Cell Culture](#)

CTAG1A Antibody - N-terminal region - Images



Host: Rabbit

Target Name: CTAG1A

Sample Tissue: HT1080 Whole cell lysate

s

Antibody Dilution: 1.0µg/mlCTAG1A is strongly supported by BioGPS gene expression data to be expressed in Human HT1080 cells

CTAG1A Antibody - N-terminal region - References

Chen Y.-T.,et al.Proc. Natl. Acad. Sci. U.S.A. 94:1914-1918(1997).

Lethe B.G.,et al.Int. J. Cancer 76:903-908(1998).

Wang R.-F.,et al.J. Immunol. 161:3598-3606(1998).

De Smet C.,et al.Mol. Cell. Biol. 19:7327-7335(1999).

Aradhya S.,et al.Hum. Mol. Genet. 10:2557-2567(2001).