

CCDC92 Antibody - N-terminal region
Rabbit Polyclonal Antibody
Catalog # AI15585

Specification

CCDC92 Antibody - N-terminal region - Product Information

Application	WB
Primary Accession	Q53HC0
Other Accession	NM_025140 , NP_079416
Reactivity	Human, Rabbit, Horse, Bovine, Dog
Predicted	Human, Rabbit, Horse, Bovine, Dog
Host	Rabbit
Clonality	Polyclonal
Calculated MW	36kDa KDa

CCDC92 Antibody - N-terminal region - Additional Information

Gene ID 80212

Other Names

Coiled-coil domain-containing protein 92, Limkain beta-2, CCDC92

Format

Liquid. Purified antibody supplied in 1x PBS buffer with 0.09% (w/v) sodium azide and 2% sucrose.

Reconstitution & Storage

Add 50 μ l of distilled water. Final Anti-CCDC92 antibody concentration is 1 mg/ml in PBS buffer with 2% sucrose. For longer periods of storage, store at -20°C. Avoid repeat freeze-thaw cycles.

Precautions

CCDC92 Antibody - N-terminal region is for research use only and not for use in diagnostic or therapeutic procedures.

CCDC92 Antibody - N-terminal region - Protein Information

Name CCDC92

Function

Interferon-stimulated protein that plays a role in innate immunity. Strongly inhibits ebolavirus transcription and replication. Forms a complex with viral RNA-bound nucleocapsid NP and thereby prevents the transport of NP to the cell surface.

Cellular Location

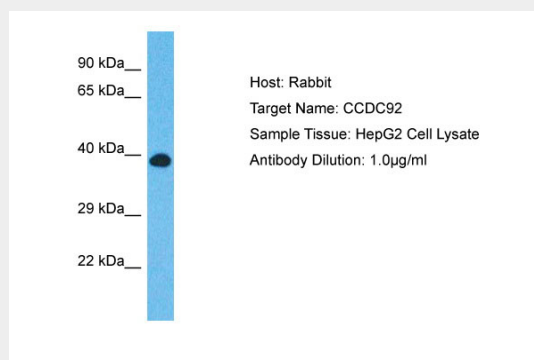
Cytoplasm, cytoskeleton, microtubule organizing center, centrosome, centriole. Cytoplasm

CCDC92 Antibody - N-terminal region - Protocols

Provided below are standard protocols that you may find useful for product applications.

- [Western Blot](#)
- [Blocking Peptides](#)
- [Dot Blot](#)
- [Immunohistochemistry](#)
- [Immunofluorescence](#)
- [Immunoprecipitation](#)
- [Flow Cytometry](#)
- [Cell Culture](#)

CCDC92 Antibody - N-terminal region - Images



Host: Rabbit

Target Name: CCDC92

Sample Tissue: HepG2 Whole cell lysate

S

Antibody Dilution: 1.0µg/ml
CCDC92 is supported by BioGPS gene expression data to be expressed in HepG2

CCDC92 Antibody - N-terminal region - References

- Miyamoto K., et al. Submitted (JUN-1998) to the EMBL/GenBank/DDBJ databases.
Ota T., et al. Nat. Genet. 36:40-45(2004).
Suzuki Y., et al. Submitted (APR-2005) to the EMBL/GenBank/DDBJ databases.
Scherer S.E., et al. Nature 440:346-351(2006).
Chaki M., et al. Cell 150:533-548(2012).