

SAPCD2 Antibody - middle region
Rabbit Polyclonal Antibody
Catalog # AI15567**Specification**

SAPCD2 Antibody - middle region - Product Information

Application	WB
Primary Accession	Q86UD0
Other Accession	NM_178448 , NP_848543
Reactivity	Human, Rabbit, Guinea Pig, Dog
Predicted	Human, Rabbit, Pig, Guinea Pig, Dog
Host	Rabbit
Clonality	Polyclonal
Calculated MW	43kDa KDa

SAPCD2 Antibody - middle region - Additional Information**Gene ID** 89958**Alias Symbol** **C9orf140, p42.3****Other Names**

Suppressor APC domain-containing protein 2, Tumor specificity and mitosis phase-dependent expression protein, TS/MDEP, p42.3, SAPCD2, C9orf140

Format

Liquid. Purified antibody supplied in 1x PBS buffer with 0.09% (w/v) sodium azide and 2% sucrose.

Reconstitution & Storage

Add 50 ul of distilled water. Final anti-SAPCD2 antibody concentration is 1 mg/ml in PBS buffer with 2% sucrose. For longer periods of storage, store at 20°C. Avoid repeat freeze-thaw cycles.

Precautions

SAPCD2 Antibody - middle region is for research use only and not for use in diagnostic or therapeutic procedures.

SAPCD2 Antibody - middle region - Protein Information**Name** SAPCD2 ([HGNC:28055](#))**Synonyms** C9orf140**Function**Plays a role in planar mitotic spindle orientation in retinal progenitor cells (RPCs) and promotes the production of symmetric terminal divisions (By similarity). Negatively regulates the mitotic apical cortex localization of GPSM2 (PubMed: <http://www.uniprot.org/citations/26766442> target="_blank">26766442). Involved also in positive regulation of cell proliferation and tumor cell growth (PubMed: <http://www.uniprot.org/citations/23576022> target="_blank">23576022, PubMed: <http://www.uniprot.org/citations/23704824>

target="_blank">23704824).

Cellular Location

Cytoplasm. Nucleus. Cytoplasm, cell cortex. Apical cell membrane {ECO:0000250|UniProtKB:Q9D818}. Cell junction, tight junction. Note=Localized at the apical cortical region during the M phase. In horizontally retinal progenitor dividing cells, localized at the pole cortical region from prophase to telophase cells. In vertically retinal progenitor dividing cells, not detected at the pole cortical region at any stage of mitosis {ECO:0000250|UniProtKB:Q9D818}

Tissue Location

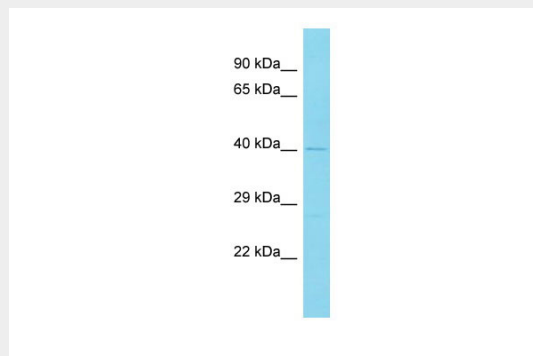
Expressed in 5-month-old fetal tissues, including stomach, intestine, colon, liver, brain, lung, heart, spleen and kidney (PubMed:17525738). Undetectable in non-cancerous adult tissues (PubMed:17525738). Expressed in many primary gastric carcinoma, but almost not in adjacent normal mucosa (PubMed:17525738). Expressed preferentially in M and G1 phases, compared to S and G2 phases (PubMed:17525738). Expression is up-regulated in hepatocellular carcinoma (HCC) and colorectal cancer (CRC) tissues (at protein level) (PubMed:23704824).

SAPCD2 Antibody - middle region - Protocols

Provided below are standard protocols that you may find useful for product applications.

- [Western Blot](#)
- [Blocking Peptides](#)
- [Dot Blot](#)
- [Immunohistochemistry](#)
- [Immunofluorescence](#)
- [Immunoprecipitation](#)
- [Flow Cytometry](#)
- [Cell Culture](#)

SAPCD2 Antibody - middle region - Images



Host: Rabbit
Target Name: SAPCD2
Sample Tissue: Fetal Lung lysates
Antibody Dilution: 1.0µg/ml