

SAMM50 Antibody - N-terminal region
Rabbit Polyclonal Antibody
Catalog # AI15535**Specification**

SAMM50 Antibody - N-terminal region - Product Information

Application	WB
Primary Accession	O9Y512
Other Accession	NM_015380 , NP_056195
Reactivity	Human, Mouse, Rat, Rabbit, Horse, Bovine, Guinea Pig, Dog
Predicted	Human, Mouse, Rat, Rabbit, Pig, Horse, Bovine, Guinea Pig, Dog
Host	Rabbit
Clonality	Polyclonal
Calculated MW	52kDa KDa

SAMM50 Antibody - N-terminal region - Additional Information**Gene ID** 25813**Alias Symbol** OMP85, SAM50, TOB55, TRG-3, YNL026W**Other Names**

Sorting and assembly machinery component 50 homolog, Transformation-related gene 3 protein, TRG-3, SAMM50, SAM50

Format

Liquid. Purified antibody supplied in 1x PBS buffer with 0.09% (w/v) sodium azide and 2% sucrose.

Reconstitution & Storage

Add 50 ul of distilled water. Final anti-SAMM50 antibody concentration is 1 mg/ml in PBS buffer with 2% sucrose. For longer periods of storage, store at 20°C. Avoid repeat freeze-thaw cycles.

Precautions

SAMM50 Antibody - N-terminal region is for research use only and not for use in diagnostic or therapeutic procedures.

SAMM50 Antibody - N-terminal region - Protein Information**Name** SAMM50**Synonyms** SAM50**Function**

Plays a crucial role in the maintenance of the structure of mitochondrial cristae and the proper assembly of the mitochondrial respiratory chain complexes (PubMed:22252321, PubMed:25781180). Required for

the assembly of TOMM40 into the TOM complex (PubMed:15644312).

Cellular Location

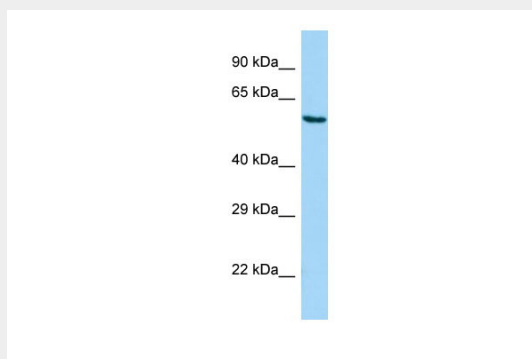
Mitochondrion outer membrane; Multi-pass membrane protein. Cytoplasm {ECO:0000250|UniProtKB:Q6AXV4}. Mitochondrion

SAMM50 Antibody - N-terminal region - Protocols

Provided below are standard protocols that you may find useful for product applications.

- [Western Blot](#)
- [Blocking Peptides](#)
- [Dot Blot](#)
- [Immunohistochemistry](#)
- [Immunofluorescence](#)
- [Immunoprecipitation](#)
- [Flow Cytometry](#)
- [Cell Culture](#)

SAMM50 Antibody - N-terminal region - Images



Host: Rabbit

Target Name: SAMM50

Sample Tissue: A549 Whole cell lysate

s

Antibody Dilution: 1.0µg/ml

SAMM50 Antibody - N-terminal region - References

Lai C.-H., et al. *Genome Res.* 10:703-713(2000).

Kim J.W., et al. Submitted (DEC-2002) to the EMBL/GenBank/DDBJ databases.

Ota T., et al. *Nat. Genet.* 36:40-45(2004).

Collins J.E., et al. *Genome Biol.* 5:R84.1-R84.11(2004).

Suzuki Y., et al. Submitted (APR-2005) to the EMBL/GenBank/DDBJ databases.