

RTN4RL1 Antibody - C-terminal region
Rabbit Polyclonal Antibody
Catalog # AI15532**Specification**

RTN4RL1 Antibody - C-terminal region - Product Information

Application	WB
Primary Accession	O86UN2
Other Accession	NM_178568 , NP_848663
Reactivity	Human, Pig, Horse, Bovine, Dog
Predicted	Human, Pig, Horse, Bovine, Dog
Host	Rabbit
Clonality	Polyclonal
Calculated MW	49kDa KDa

RTN4RL1 Antibody - C-terminal region - Additional Information**Gene ID** 146760**Alias Symbol** **NGRH2, NgR3****Other Names**

Reticulon-4 receptor-like 1, Nogo receptor-like 2, Nogo-66 receptor homolog 2, Nogo-66 receptor-related protein 3, NgR3, RTN4RL1 (http://www.genenames.org/cgi-bin/gene_symbol_report?hgnc_id=21329)
target="_blank">HGNC:21329)

Format

Liquid. Purified antibody supplied in 1x PBS buffer with 0.09% (w/v) sodium azide and 2% sucrose.

Reconstitution & Storage

Add 50 ul of distilled water. Final anti-RTN4RL1 antibody concentration is 1 mg/ml in PBS buffer with 2% sucrose. For longer periods of storage, store at 20°C. Avoid repeat freeze-thaw cycles.

Precautions

RTN4RL1 Antibody - C-terminal region is for research use only and not for use in diagnostic or therapeutic procedures.

RTN4RL1 Antibody - C-terminal region - Protein Information**Name** RTN4RL1 ([HGNC:21329](#))**Function**

Cell surface receptor. Plays a functionally redundant role in postnatal brain development and in regulating axon regeneration in the adult central nervous system. Contributes to normal axon migration across the brain midline and normal formation of the corpus callosum. Protects motoneurons against apoptosis; protection against apoptosis is probably mediated by MAG. Plays a role in inhibiting neurite outgrowth and axon regeneration via its binding to neuronal chondroitin sulfate proteoglycans. Binds heparin (By similarity). Like other family members, plays a role in

restricting the number dendritic spines and the number of synapses that are formed during brain development (PubMed:22325200). Signaling mediates activation of Rho and downstream reorganization of the actin cytoskeleton (PubMed:22325200).

Cellular Location

Cell membrane; Lipid-anchor, GPI-anchor. Membrane raft. Perikaryon {ECO:0000250|UniProtKB:Q80WD0}. Cell projection {ECO:0000250|UniProtKB:Q80WD0}. Note=Localized to the surface of neurons, including axons. {ECO:0000250|UniProtKB:Q80WD0}

Tissue Location

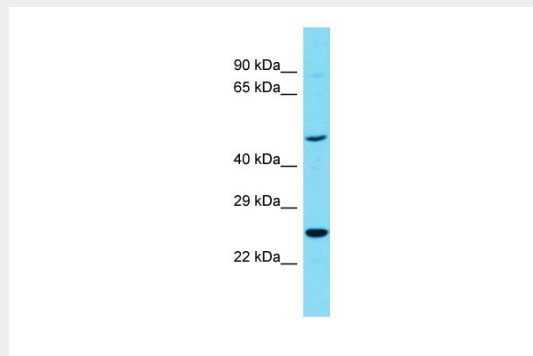
Predominantly expressed in brain. Expressed at lower levels in kidney, lung, mammary gland, placenta, salivary gland, skeletal muscle and spleen.

RTN4RL1 Antibody - C-terminal region - Protocols

Provided below are standard protocols that you may find useful for product applications.

- [Western Blot](#)
- [Blocking Peptides](#)
- [Dot Blot](#)
- [Immunohistochemistry](#)
- [Immunofluorescence](#)
- [Immunoprecipitation](#)
- [Flow Cytometry](#)
- [Cell Culture](#)

RTN4RL1 Antibody - C-terminal region - Images



Host: Rabbit
Target Name: RTN4RL1
Sample Tissue: OVCAR-3 Whole cell lysate
s
Antibody Dilution: 1.0µg/ml

RTN4RL1 Antibody - C-terminal region - References

Lauren J.,et al.Mol. Cell. Neurosci. 24:581-594(2003).
Pignot V.,et al.J. Neurochem. 85:717-728(2003).
Mural R.J.,et al.Submitted (SEP-2005) to the EMBL/GenBank/DDBJ databases.
Bechtel S.,et al.BMC Genomics 8:399-399(2007).
Barton W.A.,et al.EMBO J. 22:3291-3302(2003).

