

PPM1L Antibody - middle region
Rabbit Polyclonal Antibody
Catalog # AI15528

Specification

PPM1L Antibody - middle region - Product Information

Application	WB
Primary Accession	Q5SGD2
Other Accession	NM_139245 , NP_640338
Reactivity	Human, Mouse, Rat, Horse, Bovine, Guinea Pig, Dog
Predicted	Human, Mouse, Rat, Pig, Horse, Bovine, Guinea Pig, Dog
Host	Rabbit
Clonality	Polyclonal
Calculated MW	40kDa KDa

PPM1L Antibody - middle region - Additional Information

Gene ID 151742

Alias Symbol MGC132545, MGC132547, PP2C-epsilon, PP2CE, PPM1-LIKE

Other Names

Protein phosphatase 1L, 3.1.3.16, Protein phosphatase 1-like, Protein phosphatase 2C isoform epsilon, PP2C-epsilon, PPM1L, PP2CE

Format

Liquid. Purified antibody supplied in 1x PBS buffer with 0.09% (w/v) sodium azide and 2% sucrose.

Reconstitution & Storage

Add 50 ul of distilled water. Final anti-PPM1L antibody concentration is 1 mg/ml in PBS buffer with 2% sucrose. For longer periods of storage, store at 20°C. Avoid repeat freeze-thaw cycles.

Precautions

PPM1L Antibody - middle region is for research use only and not for use in diagnostic or therapeutic procedures.

PPM1L Antibody - middle region - Protein Information

Name PPM1L

Synonyms PP2CE

Function

Acts as a suppressor of the SAPK signaling pathways by associating with and dephosphorylating MAP3K7/TAK1 and MAP3K5, and by attenuating the association between MAP3K7/TAK1 and MAP2K4 or MAP2K6.

Cellular Location

Membrane; Single-pass type I membrane protein

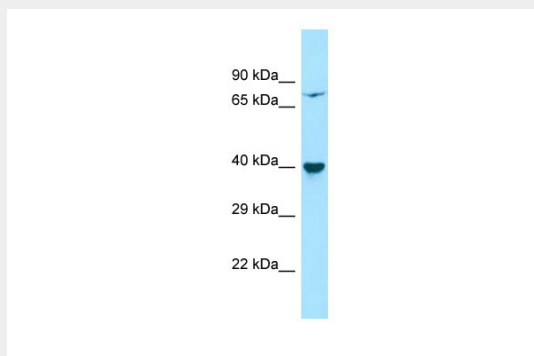
Tissue Location

Ubiquitous. Highly expressed in heart, placenta, lung, liver, kidney and pancreas.

PPM1L Antibody - middle region - Protocols

Provided below are standard protocols that you may find useful for product applications.

- [Western Blot](#)
- [Blocking Peptides](#)
- [Dot Blot](#)
- [Immunohistochemistry](#)
- [Immunofluorescence](#)
- [Immunoprecipitation](#)
- [Flow Cytometry](#)
- [Cell Culture](#)

PPM1L Antibody - middle region - Images

Host: Rabbit

Target Name: PPM1L

Sample Tissue: HepG2 Whole cell lysate

s

Antibody Dilution: 1.0 μ g/ml

PPM1L Antibody - middle region - References

Jin F., et al. Mol. Biol. Rep. 31:197-202(2004).

Ota T., et al. Nat. Genet. 36:40-45(2004).

Saito J., et al. Biochem. J. 405:591-596(2007).