

OSGEPL1 Antibody - C-terminal region
Rabbit Polyclonal Antibody
Catalog # AI15522**Specification****OSGEPL1 Antibody - C-terminal region - Product Information**

Application	WB
Primary Accession	O9H4B0
Other Accession	NM_022353 , NP_071748
Reactivity	Human, Mouse, Rat, Rabbit, Pig, Bovine, Guinea Pig, Dog
Predicted	Human, Mouse, Rat, Rabbit, Pig, Bovine, Guinea Pig, Dog
Host	Rabbit
Clonality	Polyclonal
Calculated MW	48kDa KDa

OSGEPL1 Antibody - C-terminal region - Additional Information**Gene ID** 64172**Alias Symbol** **Qri7****Other Names**

Probable tRNA N6-adenosine threonylcarbamoyltransferase, mitochondrial {ECO:0000255|HAMAP-Rule:MF_03179}, 2.6.99.4, N6-L-threonylcarbamoyladenine synthase, t(6)A synthase, O-sialoglycoprotein endopeptidase-like protein 1 {ECO:0000255|HAMAP-Rule:MF_03179}, t(6)A37 threonylcarbamoyladenine biosynthesis protein OSGEPL1 {ECO:0000255|HAMAP-Rule:MF_03179}, tRNA threonylcarbamoyladenine biosynthesis protein OSGEPL1 {ECO:0000255|HAMAP-Rule:MF_03179}, OSGEPL1 {ECO:0000255|HAMAP-Rule:MF_03179}, GCP1

Format

Liquid. Purified antibody supplied in 1x PBS buffer with 0.09% (w/v) sodium azide and 2% sucrose.

Reconstitution & Storage

Add 50 ul of distilled water. Final anti-OSGEPL1 antibody concentration is 1 mg/ml in PBS buffer with 2% sucrose. For longer periods of storage, store at 20°C. Avoid repeat freeze-thaw cycles.

Precautions

OSGEPL1 Antibody - C-terminal region is for research use only and not for use in diagnostic or therapeutic procedures.

OSGEPL1 Antibody - C-terminal region - Protein Information**Name** OSGEPL1 {ECO:0000255|HAMAP-Rule:MF_03179}**Synonyms** GCP1

Function

Required for the formation of a threonylcarbamoyl group on adenosine at position 37 (t(6)A37) in mitochondrial tRNAs that read codons beginning with adenine. Probably involved in the transfer of the threonylcarbamoyl moiety of threonylcarbamoyl-AMP (TC-AMP) to the N6 group of A37. Involved in mitochondrial genome maintenance.

Cellular Location

Mitochondrion {ECO:0000255|HAMAP-Rule:MF_03179, ECO:0000269|PubMed:19694617, ECO:0000269|PubMed:29760464}

Tissue Location

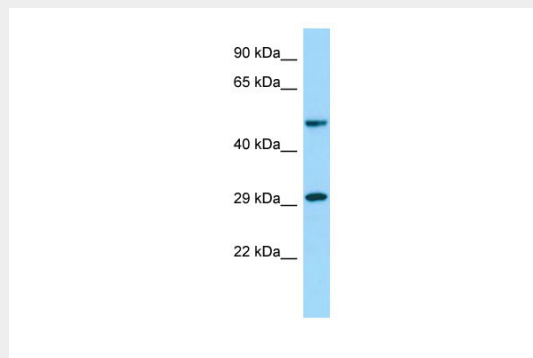
Widely expressed, with maximum expression in pituitary gland, prostate, rectum and uterus

OSGEPL1 Antibody - C-terminal region - Protocols

Provided below are standard protocols that you may find useful for product applications.

- [Western Blot](#)
- [Blocking Peptides](#)
- [Dot Blot](#)
- [Immunohistochemistry](#)
- [Immunofluorescence](#)
- [Immunoprecipitation](#)
- [Flow Cytometry](#)
- [Cell Culture](#)

OSGEPL1 Antibody - C-terminal region - Images



Host: Rabbit
Target Name: OSGEPL1
Sample Tissue: MCF7 Whole cell lysate
s
Antibody Dilution: 1.0µg/ml