

KDEL2 Antibody - middle region
Rabbit Polyclonal Antibody
Catalog # AI15507**Specification**

KDEL2 Antibody - middle region - Product Information

Application	WB
Primary Accession	P33947
Other Accession	NM_001100603 , NP_001094073
Reactivity	Human
Predicted	Human
Host	Rabbit
Clonality	Polyclonal
Calculated MW	21kDa KDa

KDEL2 Antibody - middle region - Additional Information**Gene ID** 11014**Alias Symbol** **ELP-1, ERD2.2****Other Names**

ER lumen protein-retaining receptor 2, ERD2-like protein 1, ELP-1, KDEL endoplasmic reticulum protein retention receptor 2, KDEL receptor 2, KDEL2, ERD2.2

Format

Liquid. Purified antibody supplied in 1x PBS buffer with 0.09% (w/v) sodium azide and 2% sucrose.

Reconstitution & Storage

Add 50 ul of distilled water. Final anti-KDEL2 antibody concentration is 1 mg/ml in PBS buffer with 2% sucrose. For longer periods of storage, store at 20°C. Avoid repeat freeze-thaw cycles.

Precautions

KDEL2 Antibody - middle region is for research use only and not for use in diagnostic or therapeutic procedures.

KDEL2 Antibody - middle region - Protein Information**Name** KDEL2**Synonyms** ERD2.2 {ECO:0000303|PubMed:1325562}**Function**

Membrane receptor that binds the K-D-E-L sequence motif in the C-terminal part of endoplasmic reticulum resident proteins and maintains their localization in that compartment by participating to their vesicle-mediated recycling back from the Golgi (PubMed:1325562, PubMed:18086916, PubMed:33053334). Binding is pH

dependent, and is optimal at pH 5-5.4 (By similarity).

Cellular Location

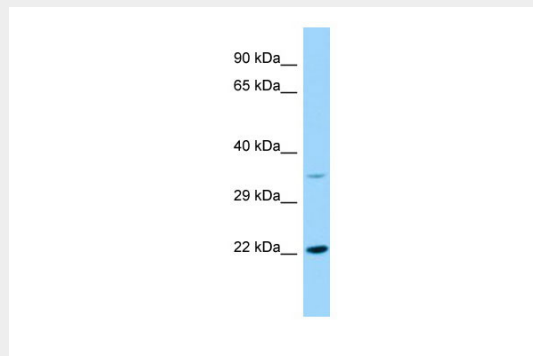
Endoplasmic reticulum membrane; Multi-pass membrane protein {ECO:0000250|UniProtKB:Q5ZKX9}. Golgi apparatus membrane; Multi-pass membrane protein {ECO:0000250|UniProtKB:Q5ZKX9}. Cytoplasmic vesicle, COPI-coated vesicle membrane; Multi-pass membrane protein {ECO:0000250|UniProtKB:Q5ZKX9} Note=Localized in the Golgi in the absence of bound proteins with the sequence motif K-D-E-L. Trafficks back to the endoplasmic reticulum together with cargo proteins containing the sequence motif K-D-E-L

KDEL2 Antibody - middle region - Protocols

Provided below are standard protocols that you may find useful for product applications.

- [Western Blot](#)
- [Blocking Peptides](#)
- [Dot Blot](#)
- [Immunohistochemistry](#)
- [Immunofluorescence](#)
- [Immunoprecipitation](#)
- [Flow Cytometry](#)
- [Cell Culture](#)

KDEL2 Antibody - middle region - Images



Host: Rabbit
Target Name: KDEL2
Sample Tissue: RPMI-8226 Whole cell lysate
s
Antibody Dilution: 1.0µg/ml

KDEL2 Antibody - middle region - References

Lewis M.J., et al. J. Mol. Biol. 226:913-916(1992).
Hsu V.W., et al. Cell 69:625-635(1992).
Ota T., et al. Nat. Genet. 36:40-45(2004).
Hillier L.W., et al. Nature 424:157-164(2003).
Scherer S.W., et al. Science 300:767-772(2003).