

**FBXO17 Antibody - N-terminal region**  
**Rabbit Polyclonal Antibody**  
**Catalog # AI15504**

**Specification**

---

**FBXO17 Antibody - N-terminal region - Product Information**

Application	WB
Primary Accession	<a href="#">O96EF6</a>
Other Accession	<a href="#">NM_148169</a> , <a href="#">NP_680474</a>
Reactivity	Human, Mouse, Rat, Rabbit, Bovine, Guinea Pig, Dog
Predicted	Human, Mouse, Rat, Rabbit, Pig, Bovine, Guinea Pig, Dog
Host	Rabbit
Clonality	Polyclonal
Calculated MW	32kDa kDa

**FBXO17 Antibody - N-terminal region - Additional Information**

**Gene ID** 115290

**Alias Symbol** FBG4, FBX26, FBXO26, FLJ11798, FLJ25205, FLJ58300, Fbx17, MGC9379

**Other Names**

F-box only protein 17, F-box only protein 26, FBXO17, FBG4, FBX17, FBX26, FBXO26

**Format**

Liquid. Purified antibody supplied in 1x PBS buffer with 0.09% (w/v) sodium azide and 2% sucrose.

**Reconstitution & Storage**

Add 50 ul of distilled water. Final anti-FBXO17 antibody concentration is 1 mg/ml in PBS buffer with 2% sucrose. For longer periods of storage, store at 20°C. Avoid repeat freeze-thaw cycles.

**Precautions**

FBXO17 Antibody - N-terminal region is for research use only and not for use in diagnostic or therapeutic procedures.

**FBXO17 Antibody - N-terminal region - Protein Information**

**Name** FBXO17

**Synonyms** FBG4, FBX17, FBX26, FBXO26

**Function**

Substrate-recognition component of the SCF (SKP1-CUL1-F-box protein)-type E3 ubiquitin ligase complex. Able to recognize and bind denatured glycoproteins, which are modified with complex-type oligosaccharides. Also recognizes sulfated glycans. Does not bind high-mannose glycoproteins.

### Tissue Location

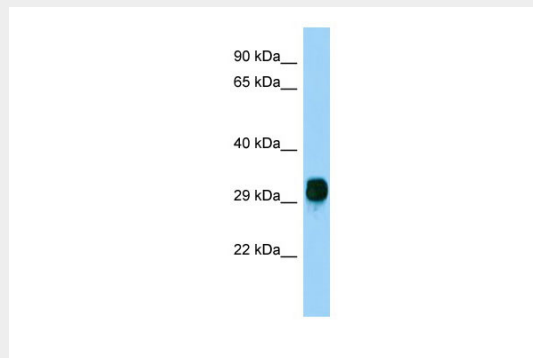
Expressed in heart, skeletal muscle, liver and kidney. Expressed at lower levels in spleen and brain

### FBXO17 Antibody - N-terminal region - Protocols

Provided below are standard protocols that you may find useful for product applications.

- [Western Blot](#)
- [Blocking Peptides](#)
- [Dot Blot](#)
- [Immunohistochemistry](#)
- [Immunofluorescence](#)
- [Immunoprecipitation](#)
- [Flow Cytometry](#)
- [Cell Culture](#)

### FBXO17 Antibody - N-terminal region - Images



Host: Rabbit

Target Name: FBXO17

Sample Tissue: HepG2 Whole cell lysate

S

Antibody Dilution: 1.0µg/ml