

**GPR111 Antibody - N-terminal region**  
**Rabbit Polyclonal Antibody**  
**Catalog # AI15496****Specification**

---

**GPR111 Antibody - N-terminal region - Product Information**

Application	WB
Primary Accession	<a href="#">Q8IZF7</a>
Other Accession	<a href="#">NM_153839</a> , <a href="#">NP_722581</a>
Reactivity	Human, Horse, Dog
Predicted	Human, Horse, Dog
Host	Rabbit
Clonality	Polyclonal
Calculated MW	78kDa KDa

**GPR111 Antibody - N-terminal region - Additional Information**

Alias Symbol	PGR20, hGPCR35
<b>Other Names</b>	
Probable G-protein coupled receptor 111, G-protein coupled receptor PGR20, GPR111, PGR20	

**Format**

Liquid. Purified antibody supplied in 1x PBS buffer with 0.09% (w/v) sodium azide and 2% sucrose.

**Reconstitution & Storage**

Add 50 ul of distilled water. Final anti-GPR111 antibody concentration is 1 mg/ml in PBS buffer with 2% sucrose. For longer periods of storage, store at 20°C. Avoid repeat freeze-thaw cycles.

**Precautions**

GPR111 Antibody - N-terminal region is for research use only and not for use in diagnostic or therapeutic procedures.

**GPR111 Antibody - N-terminal region - Protein Information**

**Name** ADGRF2P ([HGNC:18991](#))

**Synonyms** ADGRF2, GPR111, PGR20

**Function**

Orphan receptor.

**Cellular Location**

Membrane; Multi-pass membrane protein

**Tissue Location**

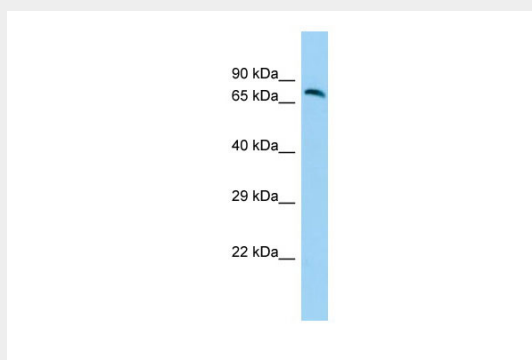
High expression in kidney. Up-regulated in lung adenocarcinomas and prostate cancers.

## GPR111 Antibody - N-terminal region - Protocols

Provided below are standard protocols that you may find useful for product applications.

- [Western Blot](#)
- [Blocking Peptides](#)
- [Dot Blot](#)
- [Immunohistochemistry](#)
- [Immunofluorescence](#)
- [Immunoprecipitation](#)
- [Flow Cytometry](#)
- [Cell Culture](#)

## GPR111 Antibody - N-terminal region - Images



Host: Rabbit  
Target Name: GPR111  
Sample Tissue: Fetal Brain lysates  
Antibody Dilution: 1.0µg/ml

## GPR111 Antibody - N-terminal region - References

Fredriksson R., et al. *Biochem. Biophys. Res. Commun.* 301:725-734(2003).  
Suwa M., et al. Submitted (JUL-2001) to the EMBL/GenBank/DDBJ databases.  
Bonner T.I., et al. Submitted (DEC-2005) to the EMBL/GenBank/DDBJ databases.  
Mungall A.J., et al. *Nature* 425:805-811(2003).  
Takeda S., et al. *FEBS Lett.* 520:97-101(2002).