

CKMT1B Antibody - N-terminal region
Rabbit Polyclonal Antibody
Catalog # AI15483

Specification

CKMT1B Antibody - N-terminal region - Product Information

Application	WB
Primary Accession	P12532
Other Accession	XP_005254554
Reactivity	Human, Mouse, Rat, Rabbit, Pig, Horse, Bovine, Guinea Pig, Dog
Predicted	Human, Mouse, Rat, Rabbit, Pig, Horse, Bovine, Guinea Pig, Dog
Host	Rabbit
Clonality	Polyclonal
Calculated MW	45kDa KDa

CKMT1B Antibody - N-terminal region - Additional Information

Gene ID 1159;548596

Other Names

Creatine kinase U-type, mitochondrial, 2.7.3.2, Acidic-type mitochondrial creatine kinase, Mia-CK, Ubiquitous mitochondrial creatine kinase, U-MtCK, CKMT1A, CKMT

Format

Liquid. Purified antibody supplied in 1x PBS buffer with 0.09% (w/v) sodium azide and 2% sucrose.

Reconstitution & Storage

Add 50 μ l of distilled water. Final Anti-CKMT1B antibody concentration is 1 mg/ml in PBS buffer with 2% sucrose. For longer periods of storage, store at -20°C. Avoid repeat freeze-thaw cycles.

Precautions

CKMT1B Antibody - N-terminal region is for research use only and not for use in diagnostic or therapeutic procedures.

CKMT1B Antibody - N-terminal region - Protein Information

Name CKMT1A

Synonyms CKMT

Function

Reversibly catalyzes the transfer of phosphate between ATP and various phosphogens (e.g. creatine phosphate). Creatine kinase isoenzymes play a central role in energy transduction in tissues with large, fluctuating energy demands, such as skeletal muscle, heart, brain and spermatozoa.

Cellular Location

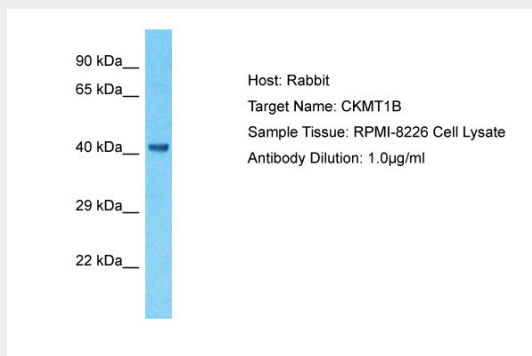
Mitochondrion inner membrane; Peripheral membrane protein; Intermembrane side

CKMT1B Antibody - N-terminal region - Protocols

Provided below are standard protocols that you may find useful for product applications.

- [Western Blot](#)
- [Blocking Peptides](#)
- [Dot Blot](#)
- [Immunohistochemistry](#)
- [Immunofluorescence](#)
- [Immunoprecipitation](#)
- [Flow Cytometry](#)
- [Cell Culture](#)

CKMT1B Antibody - N-terminal region - Images



Host: Rabbit
Target Name: CKMT1B
Sample Tissue: RPMI-8226 Whole cell lysate
s
Antibody Dilution: 1.0µg/ml

CKMT1B Antibody - N-terminal region - References

Haas R.C., et al. J. Biol. Chem. 264:2890-2897(1989).
Kalnina N., et al. Submitted (MAY-2003) to the EMBL/GenBank/DDBJ databases.
Ota T., et al. Nat. Genet. 36:40-45(2004).
Totoki Y., et al. Submitted (APR-2005) to the EMBL/GenBank/DDBJ databases.
Burkard T.R., et al. BMC Syst. Biol. 5:17-17(2011).