

CCDC134 Antibody - C-terminal region
Rabbit Polyclonal Antibody
Catalog # AI15482**Specification**

CCDC134 Antibody - C-terminal region - Product Information

Application	WB
Primary Accession	O9H6E4
Other Accession	NM_024821 , NP_079097
Reactivity	Human, Mouse, Rat, Rabbit, Horse, Bovine, Guinea Pig, Dog
Predicted	Human, Mouse, Rat, Rabbit, Pig, Horse, Bovine, Guinea Pig, Dog
Host	Rabbit
Clonality	Polyclonal
Calculated MW	25kDa kDa

CCDC134 Antibody - C-terminal region - Additional Information**Gene ID** 79879**Alias Symbol** **FLJ22349, MGC21013, dj821D11.3****Other Names**

Coiled-coil domain-containing protein 134, CCDC134

Format

Liquid. Purified antibody supplied in 1x PBS buffer with 0.09% (w/v) sodium azide and 2% sucrose.

Reconstitution & Storage

Add 50 ul of distilled water. Final anti-CCDC134 antibody concentration is 1 mg/ml in PBS buffer with 2% sucrose. For longer periods of storage, store at 20°C. Avoid repeat freeze-thaw cycles.

Precautions

CCDC134 Antibody - C-terminal region is for research use only and not for use in diagnostic or therapeutic procedures.

CCDC134 Antibody - C-terminal region - Protein Information**Name** CCDC134**Function**

In extracellular secreted form, promotes proliferation and activation of CD8(+) T cells, suggesting a cytokine-like function (PubMed:25125657). Enhances cytotoxic anti-tumor activity of CD8(+) T cells (PubMed:25125657). May inhibit ERK and JNK signaling activity (PubMed:18087676, PubMed:23070808). May

suppress cell migration and invasion activity, via its effects on ERK and JNK signaling (PubMed:23070808). Has a critical role in the regulation of osteogenesis and bone development (PubMed:32181939).

Cellular Location

Nucleus. Cytoplasm. Secreted Endoplasmic reticulum. Note=Accumulates in the nucleus in response to UV irradiation (PubMed:22644376)

Tissue Location

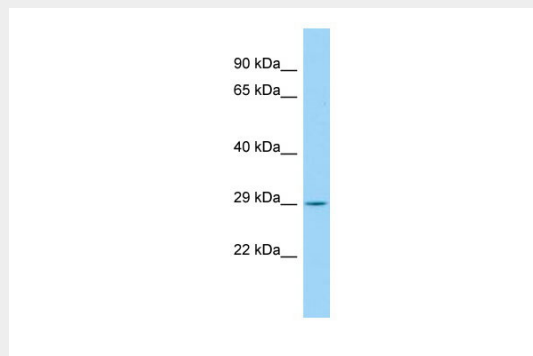
Expressed in cervical gland, cervical squamous epithelium, endometrium, stomach, kidney distal convoluted tubule, spermatogenic cells in testis, mammary gland, liver and striated muscle (at protein level) (PubMed:18087676, PubMed:23070808). Also detected in placenta (PubMed:18087676). Highest expression in testis relative to other tissues (PubMed:18087676). Detected in T cells and dendritic cells; highly expressed in activated CD8(+) T cells, and also expressed at lower levels in CD4(+) T cells (PubMed:25125657)

CCDC134 Antibody - C-terminal region - Protocols

Provided below are standard protocols that you may find useful for product applications.

- [Western Blot](#)
- [Blocking Peptides](#)
- [Dot Blot](#)
- [Immunohistochemistry](#)
- [Immunofluorescence](#)
- [Immunoprecipitation](#)
- [Flow Cytometry](#)
- [Cell Culture](#)

CCDC134 Antibody - C-terminal region - Images



Host: Rabbit
Target Name: CCDC134
Sample Tissue: Fetal Kidney lysates
Antibody Dilution: 1.0µg/ml

CCDC134 Antibody - C-terminal region - References

Collins J.E., et al. *Genome Biol.* 5:R84.1-R84.11(2004).
Ota T., et al. *Nat. Genet.* 36:40-45(2004).
Dunham I., et al. *Nature* 402:489-495(1999).
Burkard T.R., et al. *BMC Syst. Biol.* 5:17-17(2011).

