

**RPS6KB2 Antibody - C-terminal region**  
**Rabbit Polyclonal Antibody**  
**Catalog # AI15458****Specification**

---

**RPS6KB2 Antibody - C-terminal region - Product Information**

Application	WB
Primary Accession	<a href="#">O9UBS0</a>
Other Accession	<a href="#">NP_003943</a>
Reactivity	Human
Host	Rabbit
Clonality	Polyclonal
Calculated MW	53kDa KDa

**RPS6KB2 Antibody - C-terminal region - Additional Information****Gene ID** 6199**Alias Symbol** RPS6KB2, STK14B,**Other Names**

Ribosomal protein S6 kinase beta-2, S6K-beta-2, S6K2, 2.7.11.1, 70 kDa ribosomal protein S6 kinase 2, P70S6K2, p70-S6K 2, S6 kinase-related kinase, SRK, Serine/threonine-protein kinase 14B, p70 ribosomal S6 kinase beta, S6K-beta, p70 S6 kinase beta, p70 S6K-beta, p70 S6KB, p70-beta, RPS6KB2, STK14B

**Format**

Liquid. Purified antibody supplied in 1x PBS buffer with 0.09% (w/v) sodium azide and 2% sucrose.

**Reconstitution & Storage**

Add 50 µl of distilled water. Final Anti-RPS6KB2 antibody concentration is 1 mg/ml in PBS buffer with 2% sucrose. For longer periods of storage, store at -20°C. Avoid repeat freeze-thaw cycles.

**Precautions**

RPS6KB2 Antibody - C-terminal region is for research use only and not for use in diagnostic or therapeutic procedures.

**RPS6KB2 Antibody - C-terminal region - Protein Information****Name** RPS6KB2**Synonyms** STK14B**Function**

Phosphorylates specifically ribosomal protein S6 (PubMed:<a href="http://www.uniprot.org/citations/29750193" target="\_blank">29750193</a>). Seems to act downstream of mTOR signaling in response to growth factors and nutrients to promote cell proliferation, cell growth and cell cycle progression in an alternative pathway regulated by MEAK7

(PubMed:<a href="http://www.uniprot.org/citations/29750193" target="\_blank">29750193</a>).

### Cellular Location

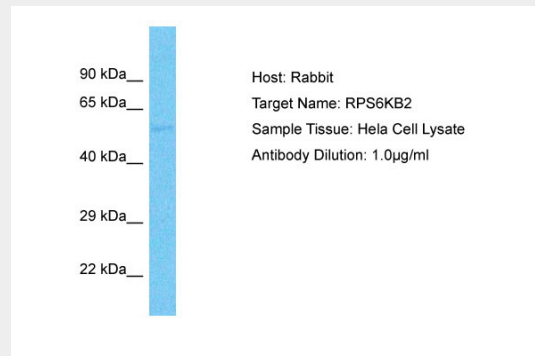
Cytoplasm. Nucleus.

### RPS6KB2 Antibody - C-terminal region - Protocols

Provided below are standard protocols that you may find useful for product applications.

- [Western Blot](#)
- [Blocking Peptides](#)
- [Dot Blot](#)
- [Immunohistochemistry](#)
- [Immunofluorescence](#)
- [Immunoprecipitation](#)
- [Flow Cytometry](#)
- [Cell Culture](#)

### RPS6KB2 Antibody - C-terminal region - Images



Host: Rabbit  
Target Name: RPS6KB2  
Sample Tissue: Hela Whole cell lysate  
s  
Antibody Dilution: 1.0µg/ml

### RPS6KB2 Antibody - C-terminal region - References

Gout I., et al. J. Biol. Chem. 273:30061-30064(1998).  
Saitoh M., et al. Biochem. Biophys. Res. Commun. 253:470-476(1998).  
Lee-Fruman K.K., et al. Oncogene 18:5108-5114(1999).  
Koh H.J., et al. Submitted (OCT-1998) to the EMBL/GenBank/DDBJ databases.  
Ota T., et al. Nat. Genet. 36:40-45(2004).