

**FCGR2C Antibody - N-terminal region**  
**Rabbit Polyclonal Antibody**  
**Catalog # AI15430**

**Specification**

---

**FCGR2C Antibody - N-terminal region - Product Information**

Application	<b>WB</b>
Primary Accession	<a href="#">P31995</a>
Other Accession	<a href="#">NM_201563</a> , <a href="#">NP_963857</a>
Reactivity	<b>Human, Rabbit, Horse, Bovine, Guinea Pig</b>
Predicted	<b>Human, Rabbit, Pig, Horse, Bovine, Guinea Pig</b>
Host	<b>Rabbit</b>
Clonality	<b>Polyclonal</b>
Calculated MW	<b>35kDa KDa</b>

**FCGR2C Antibody - N-terminal region - Additional Information**

**Gene ID** 9103

**Alias Symbol** **CD32, CD32C, CDW32, FCG2, FCRIIC, IGFR2**

**Other Names**

Low affinity immunoglobulin gamma Fc region receptor II-c, IgG Fc receptor II-c, CDw32, Fc-gamma RII-c, Fc-gamma-RIIc, FcRII-c, CD32, FCGR2C, CD32, FCG2, IGFR2

**Format**

Liquid. Purified antibody supplied in 1x PBS buffer with 0.09% (w/v) sodium azide and 2% sucrose.

**Reconstitution & Storage**

Add 50 ul of distilled water. Final anti-FCGR2C antibody concentration is 1 mg/ml in PBS buffer with 2% sucrose. For longer periods of storage, store at 20°C. Avoid repeat freeze-thaw cycles.

**Precautions**

FCGR2C Antibody - N-terminal region is for research use only and not for use in diagnostic or therapeutic procedures.

**FCGR2C Antibody - N-terminal region - Protein Information**

**Name** FCGR2C

**Synonyms** CD32, FCG2, IGFR2

**Function**

Receptor for the Fc region of complexed immunoglobulins gamma. Low affinity receptor. Involved in a variety of effector and regulatory functions such as phagocytosis of immune complexes and modulation of antibody production by B-cells.

**Cellular Location**

[Isoform IIC4]: Cytoplasm. [Isoform IIC2]: Cell membrane; Single-pass type I membrane protein

#### Tissue Location

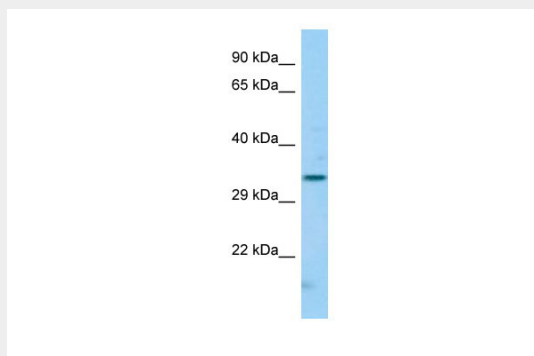
Isoform IIC1 is detected in monocytes, macrophages, polymorphonuclear cells and natural killer cells

#### FCGR2C Antibody - N-terminal region - Protocols

Provided below are standard protocols that you may find useful for product applications.

- [Western Blot](#)
- [Blocking Peptides](#)
- [Dot Blot](#)
- [Immunohistochemistry](#)
- [Immunofluorescence](#)
- [Immunoprecipitation](#)
- [Flow Cytometry](#)
- [Cell Culture](#)

#### FCGR2C Antibody - N-terminal region - Images



Host: Rabbit

Target Name: FCGR2C

Sample Tissue: Hela Whole cell lysate

s

Antibody Dilution: 1.0µg/ml

#### FCGR2C Antibody - N-terminal region - References

Stuart S.G., et al. EMBO J. 8:3657-3666(1989).

Metes D., et al. Blood 91:2369-2380(1998).

Bewarder N., et al. Mol. Cell. Biol. 16:4735-4743(1996).

Mimoto F., et al. Protein Eng. Des. Sel. 26:589-598(2013).