

**EPN3 Antibody - C-terminal region**  
**Rabbit Polyclonal Antibody**  
**Catalog # AI15428****Specification**

---

**EPN3 Antibody - C-terminal region - Product Information**

Application	WB
Primary Accession	<a href="#">O9H201</a>
Other Accession	<a href="#">NM_017957</a> , <a href="#">NP_060427</a>
Reactivity	Human, Mouse, Rat, Rabbit, Horse, Bovine, Guinea Pig, Dog
Predicted	Human, Mouse, Rat, Rabbit, Pig, Horse, Bovine, Guinea Pig, Dog
Host	Rabbit
Clonality	Polyclonal
Calculated MW	70kDa KDa

**EPN3 Antibody - C-terminal region - Additional Information****Gene ID** 55040**Other Names**

Epsin-3, EPS-15-interacting protein 3, EPN3

**Format**

Liquid. Purified antibody supplied in 1x PBS buffer with 0.09% (w/v) sodium azide and 2% sucrose.

**Reconstitution & Storage**

Add 50 ul of distilled water. Final anti-EPN3 antibody concentration is 1 mg/ml in PBS buffer with 2% sucrose. For longer periods of storage, store at 20°C. Avoid repeat freeze-thaw cycles.

**Precautions**

EPN3 Antibody - C-terminal region is for research use only and not for use in diagnostic or therapeutic procedures.

**EPN3 Antibody - C-terminal region - Protein Information****Name** EPN3**Cellular Location**Cytoplasm. Cytoplasm, perinuclear region Cytoplasmic vesicle, clathrin-coated vesicle. Nucleus  
Note=Concentrated in the perinuclear region and associated with clathrin-coated vesicles close to the cell periphery. May shuttle to the nucleus**Tissue Location**

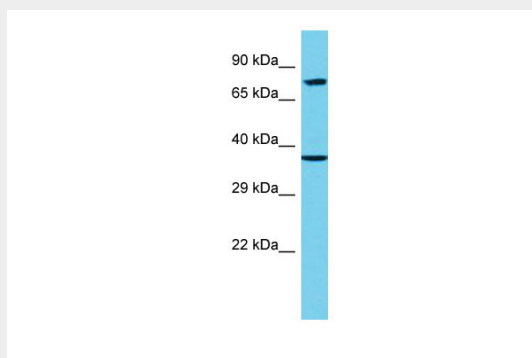
Detected in migrating keratinocytes from wounded skin, but not in differentiating keratinocytes or in normal skin Detected in chronic wounds, basal cell carcinoma and ulcerative colitis.

## EPN3 Antibody - C-terminal region - Protocols

Provided below are standard protocols that you may find useful for product applications.

- [Western Blot](#)
- [Blocking Peptides](#)
- [Dot Blot](#)
- [Immunohistochemistry](#)
- [Immunofluorescence](#)
- [Immunoprecipitation](#)
- [Flow Cytometry](#)
- [Cell Culture](#)

## EPN3 Antibody - C-terminal region - Images



Host: Rabbit

Target Name: EPN3

Sample Tissue: 293T Whole cell lysate

s

Antibody Dilution: 1.0µg/ml

## EPN3 Antibody - C-terminal region - References

Spradling K.D., et al. J. Biol. Chem. 276:29257-29267(2001).

Ota T., et al. Nat. Genet. 36:40-45(2004).

Mural R.J., et al. Submitted (SEP-2005) to the EMBL/GenBank/DDBJ databases.